

WAAS CH 90310 W12A	APP CRS 119°	Rwy Idg TDZE Apt Elev	5002 60 61
---------------------------------	------------------------	-----------------------------	---------------------------------------

RNAV (GPS) RWY 12

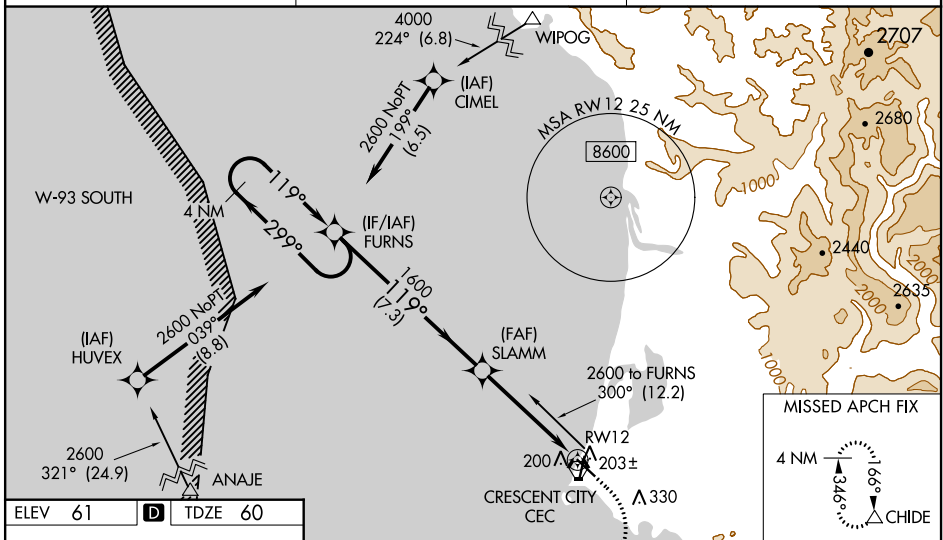
JACK MC NAMARA FLD (CEC)

▽ Inop table does not apply to LPV all Cats. For uncompensated Baro-VNAV systems, LNAV/VNAV NA below 0°C (32°F) or above 54°C (130°F). DME/DME RNP-0.3 NA. When local altimeter setting not received, use Brookings altimeter setting and increase LPV DA to 407 feet, LNAV/VNAV DA to 484 feet and all MDA 100 feet; increase LPV all Cats visibility to ½ mile, LNAV/VNAV all Cats visibility to 1/8 mile, LNAV Cat C/D to 1/8 mile, and Circling Cat C to 2 miles, Cat D to 2 1/4 miles. For inop MALS, increase LNAV/VNAV all Cats visibility to 1 mile and LNAV Cat A/B visibility to 1 mile, Cat C/D to 1/8 mile. For inop MALS, when using Brookings altimeter setting, increase LPV all Cats visibility to 1/8 mile, LNAV/VNAV all Cats visibility to 1/8 mile, and LNAV Cat A/B to 1 mile, Cat C/D to 1/8 mile. VDP and Baro-VNAV NA when using Brookings altimeter setting. Night landing: Rwy 18, 30 NA. Night landing: Rwy 36, operational VGSI required, remain on or above VGSI glidepath until threshold.

MALS

MISSED APPROACH:
Climb to 600 then climbing right turn to 3000 direct CHIDE and hold, continue climb-in-hold to 3000.

ASOS 119,925	SEATTLE CENTER 124.85 306.3	UNICOM 122.8 (CTAF) 0
------------------------	---------------------------------------	---------------------------------



ELEV 61 **D** TDZE 60

119° to RWY 12, 81, 5002 X 150, 36, 5000 X 150, 36

HIRL Rwy 12-30
REIL Rwys 18, 30 and 36
MRL Rwy 18-36

4 NM Holding Pattern FURNS

2600 ← 299° 119° →

GP 3.00° TCH 55

1600

SLAMM

*1.1 NM to RWY 12

RWY 12

7.3 NM 3.6 NM 1.1 NM

CATEGORY	A	B	C	D
LPV DA		310-3/4	250 (300-3/4)	
LNAV/VNAV DA		387-3/4	327 (400-3/4)	
LNAV MDA	460-3/4	400 (400-3/4)	460-7/8	400 (400-7/8)
C CIRCLING	540-1	479 (500-1)	640-1/2 579 (600-1/2)	640-2 579 (600-2)

600 3000 CHIDE

*LNAV only.

SW-2, 03 NOV 2022 to 01 DEC 2022

SW-2, 03 NOV 2022 to 01 DEC 2022