

WAAS CH 48844 W36A	APP CRS 358°	Rwy Idg TDZE Apt Elev	3400 1131 1131
----------------------------------------	------------------------	-----------------------------	-------------------------------------------

RNAV (GPS) RWY 36

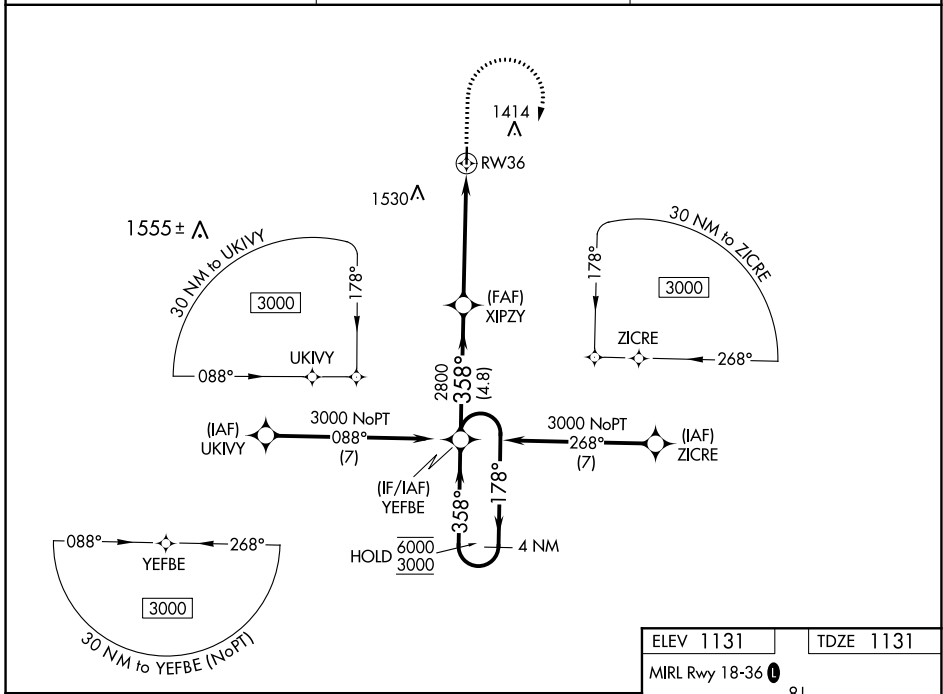
LAMONI MUNI (LWD)

RNP APCH-GPS.

⚠ Rwy 36 helicopter visibility reduction below 3/4 SM NA. For uncompensated Baro-VNAV systems, LNAV/VNAV NA below -21°C or above 54°C. Circling NA west of Rwy 18-36.

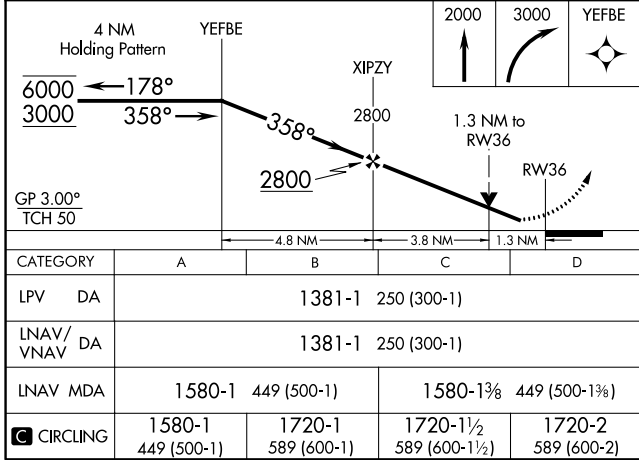
MISSED APPROACH: Climb to 2000, then climbing right turn to 3000 direct YEFBE and hold.

ASOS 120.0	MINNEAPOLIS CENTER 125.65 306.95	CTAF 122.9 0
----------------------	--------------------------------------------	-------------------------------



NC-3, 08 SEP 2022 to 06 OCT 2022

NC-3, 08 SEP 2022 to 06 OCT 2022



ELEV 1131	TDZE 1131
MIRL Rwy 18-36 0	

2000

3000

YEFBE

358°