

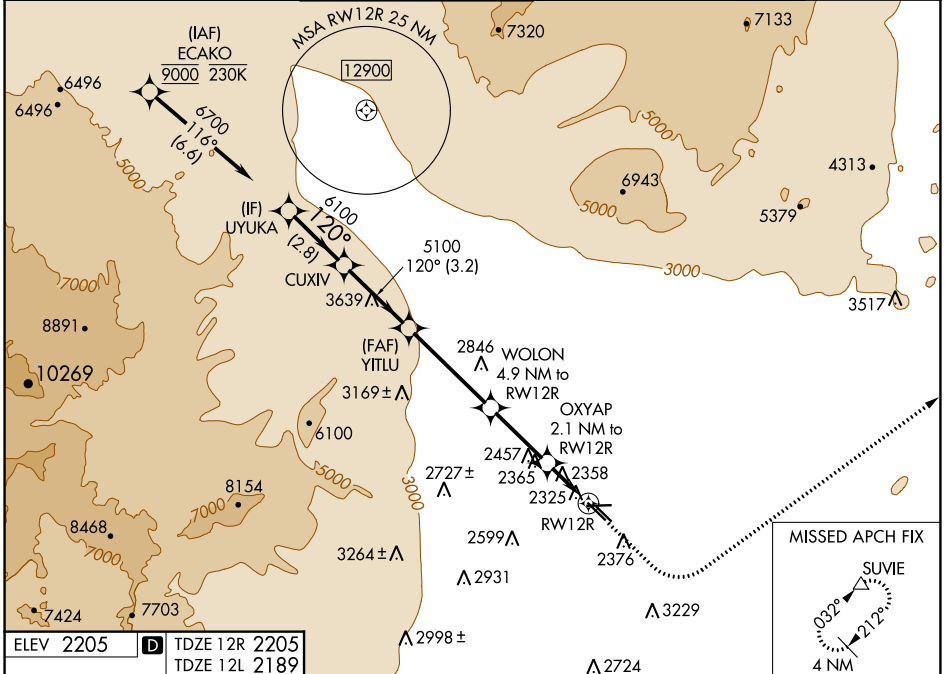
WAAS CH <b>69443</b> <b>W12A</b>	APP CRS <b>120°</b>	Rwy Idg 5000 TDZE 2205 Apt Elev 2205	12R 4199 2189 2205	12L 4199 2189 2205
--	------------------------	---	-----------------------------	-----------------------------

# RNAV (GPS) RWY 12R

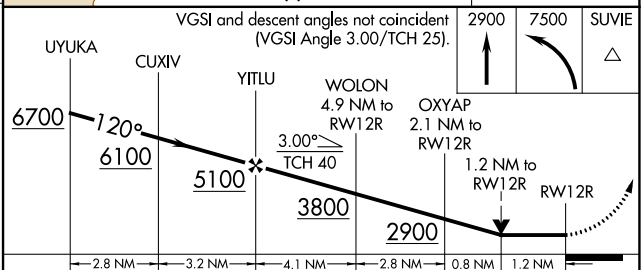
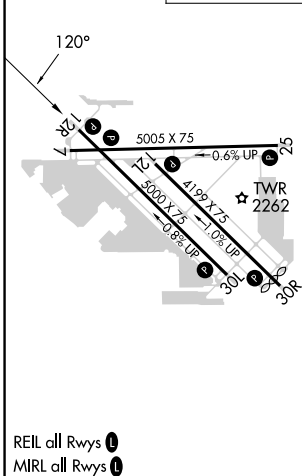
NORTH LAS VEGAS (VGT)

RNP APCH - GPS.		MISSED APPROACH: Climb to 2900 then climbing left turn to 7500 direct SUVIE and hold, continue climb-in-hold to 7500.			
Rwy 12R helicopter visibility reduction below ¾ SM NA.					

ATIS <b>118.05</b>	LAS VEGAS APP CON <b>119.4 360.85</b>	NORTH LAS VEGAS TOWER* <b>125.7 (CTAF) 360.75</b>	GND CON <b>121.7</b>	CLNC DEL <b>124.0</b>	UNICOM <b>122.95</b>
-----------------------	--	--	-------------------------	--------------------------	-------------------------



ELEV 2205	<b>D</b>	TDZE 12R 2205	TDZE 12L 2189
-----------	----------	---------------	---------------



CATEGORY	A	B	C	D
LP MDA	2620-1	415 (500-1)	2620-1½	415 (500-1½)
LNAV MDA	2820-1	615 (700-1)	2820-1¾	615 (700-1¾)
SIDESTEP 12L	2820-1	631 (700-1)	2820-1¾ 631 (700-1¾)	2820-2 631 (700-2)
<b>C</b> CIRCLING	2820-1	615 (700-1)	2840-1¾ 635 (700-1¾)	3540-3 1335 (1400-3)

SW-4, 08 SEP 2022 to 06 OCT 2022

SW-4, 08 SEP 2022 to 06 OCT 2022