

APP CRS	Rwy Idg	N/A
<b>122°</b>	TDZE	N/A
	Apt Elev	<b>1394</b>

# RNAV (GPS)-B

## FALCON FLD (F'F'Z)

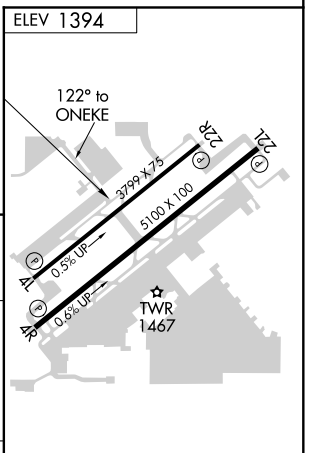
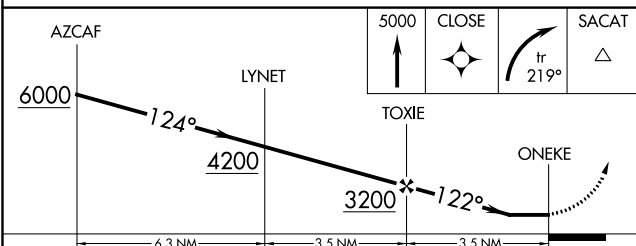
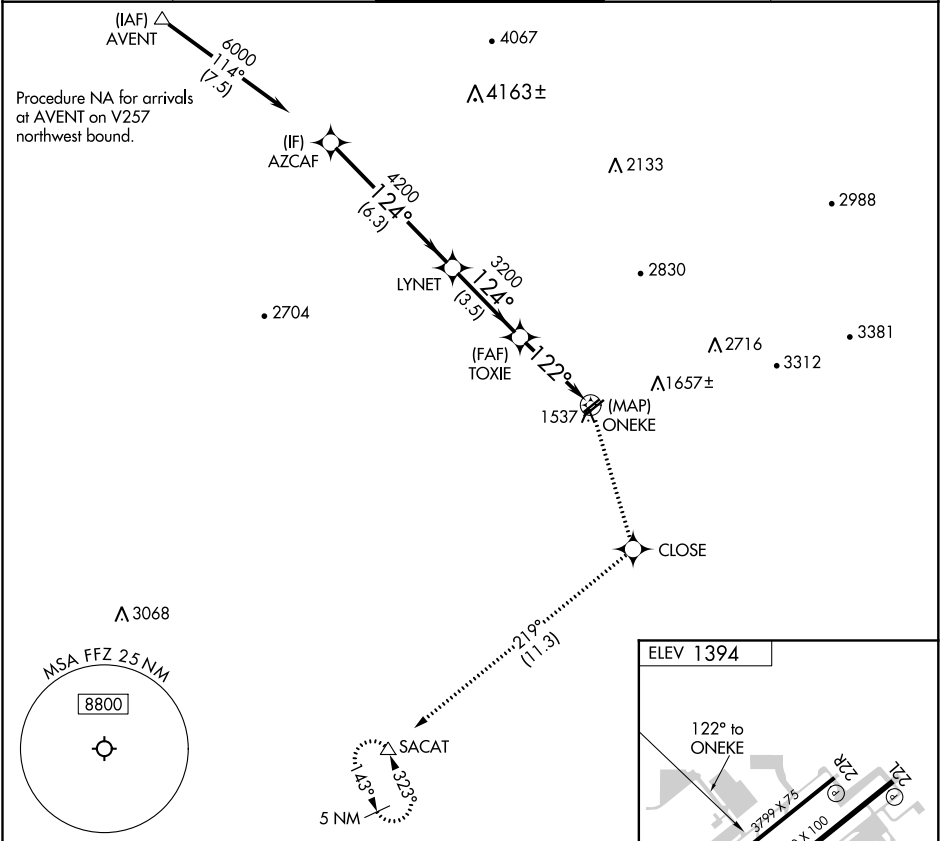
RNP APCH.

**▼** Circling Rwy 22L, 22R NA at night. Circling NA for Cat C southeast of Rwy 4R-22L.

**▲**

MISSED APPROACH: Climb to 5000 direct CLOSE and right turn on track 219° to SACAT and hold, continue climb-in-hold to 5000.

ATIS <b>118.25</b>	PHOENIX APP CON <b>120.7 239.0</b>	FALCON TOWER * <b>124.6 (CTAF) 0</b>	GND CON <b>121.3</b>	UNICOM <b>122.95</b>
-----------------------	---------------------------------------	---	-------------------------	-------------------------



CATEGORY	A	B	C	D
<b>C</b> CIRCLING	1860-1 466 (500-1)	1980-1 586 (600-1)	2040-1¾ 646 (700-1¾)	NA

REIL Rwy 4R, 4L, 22L and 22R

MIRL Rwy 4R-22L **0**

MIRL Rwy 4L-22R

SW-4, 08 SEP 2022 to 06 OCT 2022

SW-4, 08 SEP 2022 to 06 OCT 2022