

APP CRS **190°**
 Rwy Idg **5201**
 TDZE **726**
 Apt Elev **726**

RNAV (GPS) RWY 19

JAMES A RHODES (JRO)

RNP APCH.

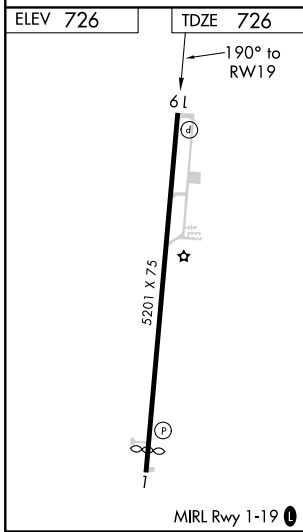
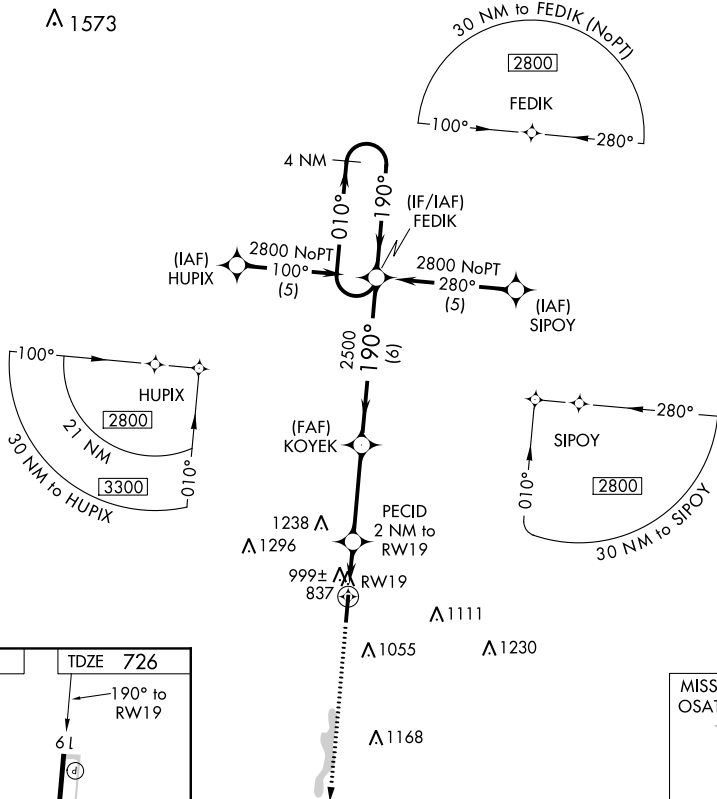
▼ When local altimeter setting not received, use Greater Portsmouth altimeter setting and increase all MDA 60 feet, and increase LNAV Cat C/D and Circling Cat B visibility ¼ SM.
 ▲ NA Rwy 19 helicopter visibility reduction below ¾ SM NA. Circling Rwy 1 NA at night.

MISSED APPROACH:
 Climb to 2800 direct
 OSATE WP and hold.

AWOS-3
118.825

HUNTINGTON APP CON
128.4 270.1

UNICOM
122.7 (CTAF) 0



2800 OSATE VGSIs and descent angles not coincident (VGSIs Angle 4.00/TCH 45). FEDIK 4 NM Holding Pattern	KOYEK PECID 2 NM to RWY 19 1460 2500 3.32° TCH 40		RWY 19 190° / 010° / 190°	
	2 NM	3.5	6 NM	
CATEGORY A B C D	LNAV MDA 1280-1 554 (600-1)		1280-1½ 554 (600-1½) 1280-1¾ 554 (600-1¾)	
CIRCLING 1340-1 614 (700-1) 1480-1 754 (800-1)	1680-3 954 (1000-3)			

EC-2, 08 SEP 2022 to 06 OCT 2022

EC-2, 08 SEP 2022 to 06 OCT 2022