

APP CRS **010°**  
 Rwy Idg **4870**  
 TDZE **722**  
 Apt Elev **726**

# RNAV (GPS) RWY 1

JAMES A RHODES (JRO)

RNP APCH - GPS.

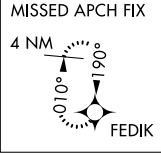
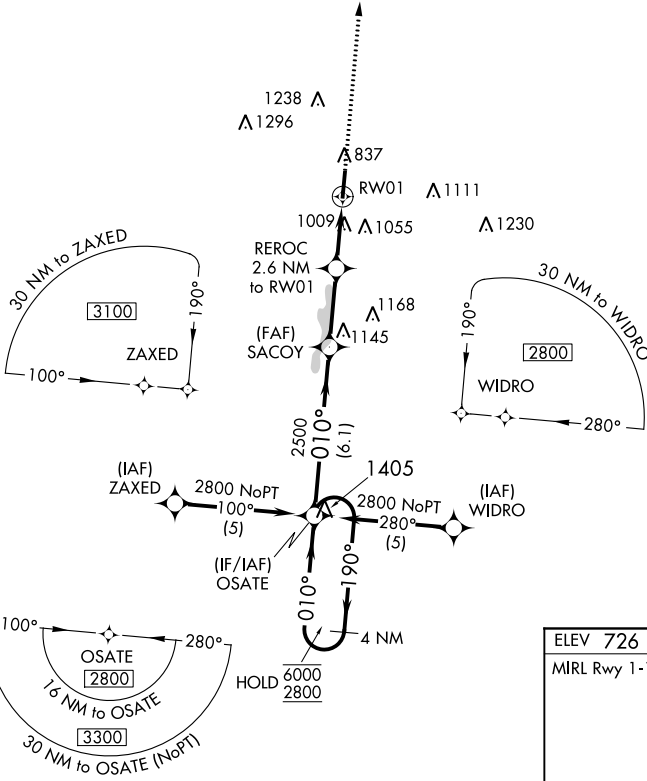
**Procedure NA at night. Rwy 1 helicopter visibility reduction below 1 SM NA.**

**MISSED APPROACH:**  
 Climb to 2800 direct FEDIK and hold.

AWOS-3  
**118.825**

HUNTINGTON APP CON  
**128.4 270.1**

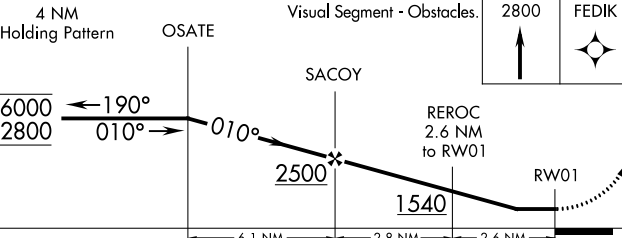
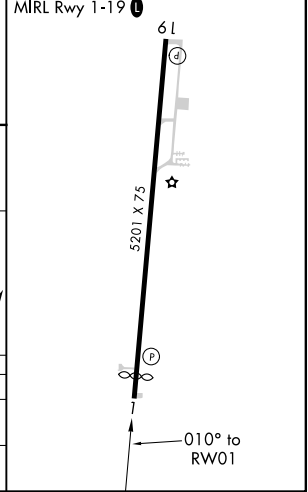
UNICOM  
**122.7(CTAF) 0**



EC-2, 08 SEP 2022 to 06 OCT 2022

EC-2, 08 SEP 2022 to 06 OCT 2022

ELEV 726 | TDZE 722



CATEGORY	A	B	C	D
LNVA MDA	1300-1	578 (600-1)	1300-1 $\frac{5}{8}$	578 (600-1 $\frac{5}{8}$ )
CIRCLING	1340-1 614 (700-1)	1480-1 754 (800-1)	1680-3	954 (1000-3)