

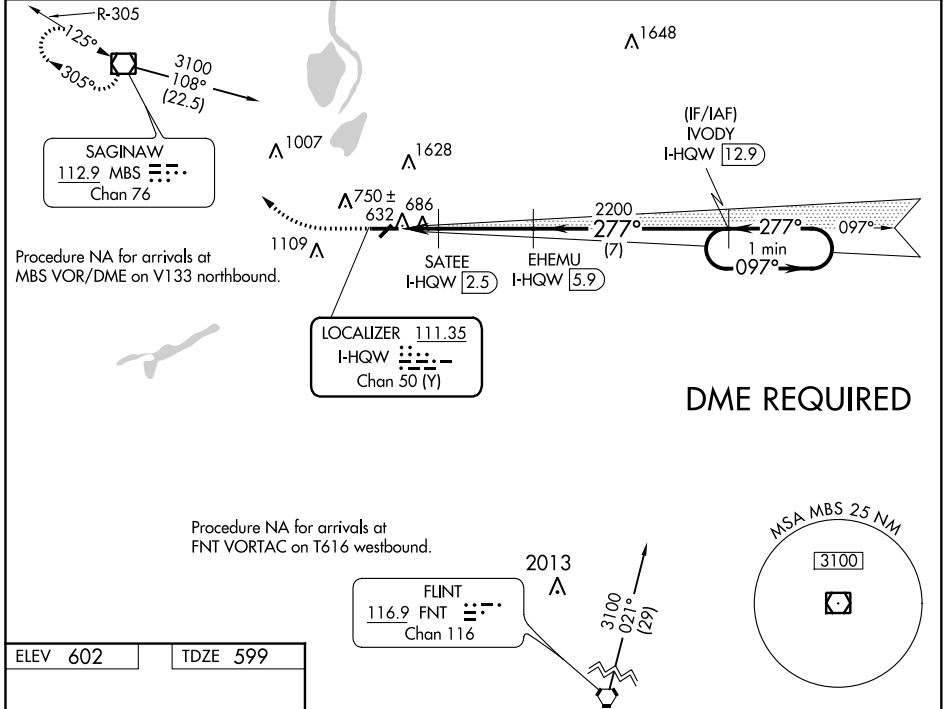
LOC/DME I-HQW 111.35 Chan 50 (Y)	APP CRS 277°	Rwy Idg TDZE Apt Elev	5002 599 602
--	------------------------	-----------------------------	---

ILS or LOC RWY 28

SAGINAW COUNTY H W BROWNE (HYX)

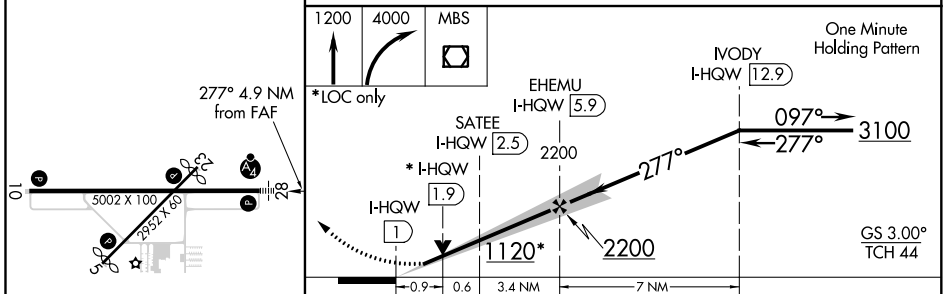
NA	Inoperative table does not apply to S-ILS 28. DME required. Circling Rwy 5, 23 NA at night. Circling NA for Cat C north of Rwy 10-28.	MALSF	MISSED APPROACH: Climb to 1200 then climbing right turn to 4000 direct MBS VOR/DME and hold, continue climb-in-hold to 4000.
-----------	---	--------------	---

AWOS-3P 118.325	GREAT LAKES APP CON * 120.95 235.625	UNICOM 122.8 (CTAF) 0
----------------------------------	---	--



DME REQUIRED

ELEV 602	TDZE 599
-----------------	-----------------



CATEGORY	A	B	C	D
S-ILS 28		802-3/4	203 (200-3/4)	NA
S-LOC 28		940-3/4	341 (400-3/4)	NA
CIRCLING	1100-1	498 (500-1)	1460-2 1/2 858 (900-2 1/2)	NA

EC-1, 08 SEP 2022 to 06 OCT 2022

EC-1, 08 SEP 2022 to 06 OCT 2022