



# LEONA FOUR DEPARTURE

AL-6453 (FAA)

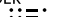
TEXAS GULF COAST RGNL (L.B.X)  
ANGLETON/LAKE JACKSON, TEXAS


**TOP ALTITUDE: ASSIGNED BY ATC**


ARDMORE  
116.7 ADM   
Chan 114  
N34°12.69' - W97°10.10'  
L-17, H-6


TULSA  
114.4 TUL   
Chan 91  
N36°11.78' - W95°47.29'


ASOS  
119.925  
CLNC DEL  
125.2  
CTAF  
123.0  
HOUSTON DEP CON  
134.45 284.0


RANGER  
115.7 FUZ   
Chan 104  
N32°53.37' - W97°10.77'  
L-17, H-6

BONHAM  
114.6 BYP   
Chan 93  
N33°32.25' - W96°14.05'  
L-17, H-6

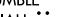
CEDAR CREEK  
114.8 CQY   
Chan 95  
N32°11.14' - W96°13.09'

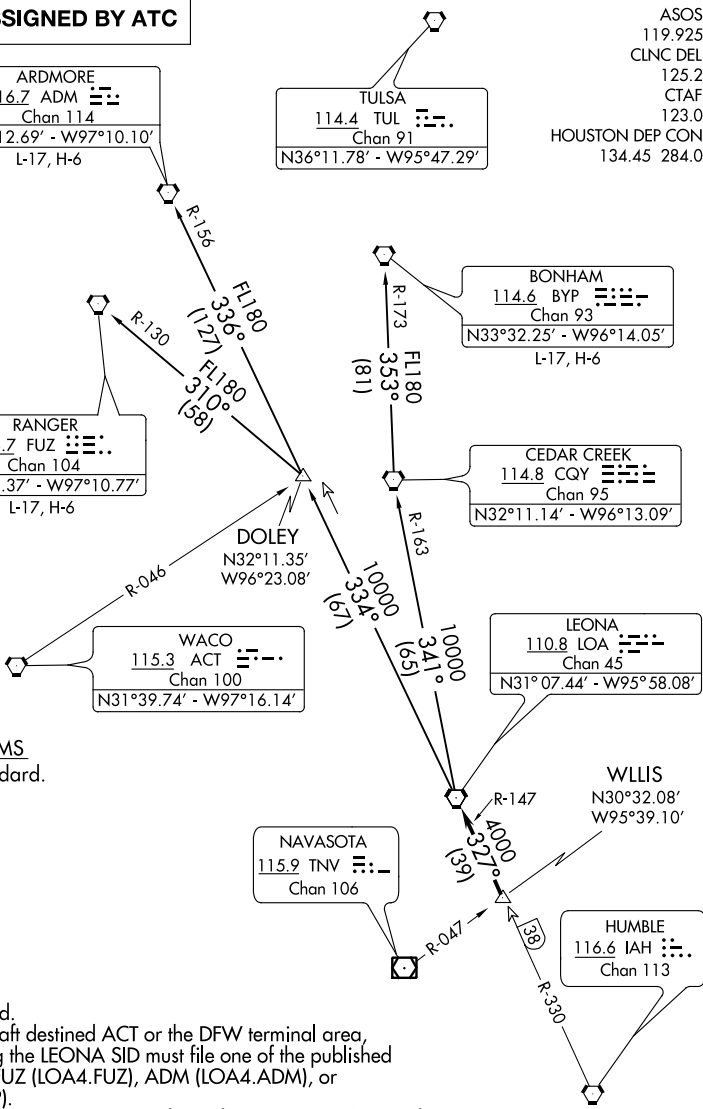
WACO  
115.3 ACT   
Chan 100  
N31°39.74' - W97°16.14'

LEONA  
110.8 LOA   
Chan 45  
N31°07.44' - W95°58.08'

NAVASOTA  
115.9 TNV   
Chan 106

WLLIS  
N30°32.08'  
W95°39.10'

HUMBLE  
116.6 IAH   
Chan 113



TAKEOFF MINIMUMS  
Rwys 17, 35: Standard.

- NOTE: RADAR required.
- NOTE: Except for aircraft destined ACT or the DFW terminal area, all aircraft filing the LEONA SID must file one of the published transitions via FUZ (LOA4.FUZ), ADM (LOA4.ADM), or BYP (LOA4.BYP).
- NOTE: RANGER TRANSITION: For aircraft overflying west/northwest of the DFW terminal area FL240 and above.
- NOTE: ARDMORE TRANSITION: For aircraft overflying north/northwest of the DFW terminal area FL240 and above.
- NOTE: BONHAM TRANSITION: For aircraft overflying/landing TUL VORTAC FL240 and above.

NOTE: Chart not to scale.

(NARRATIVE ON FOLLOWING PAGE)

SC-5, 08 SEP 2022 to 06 OCT 2022

SC-5, 08 SEP 2022 to 06 OCT 2022