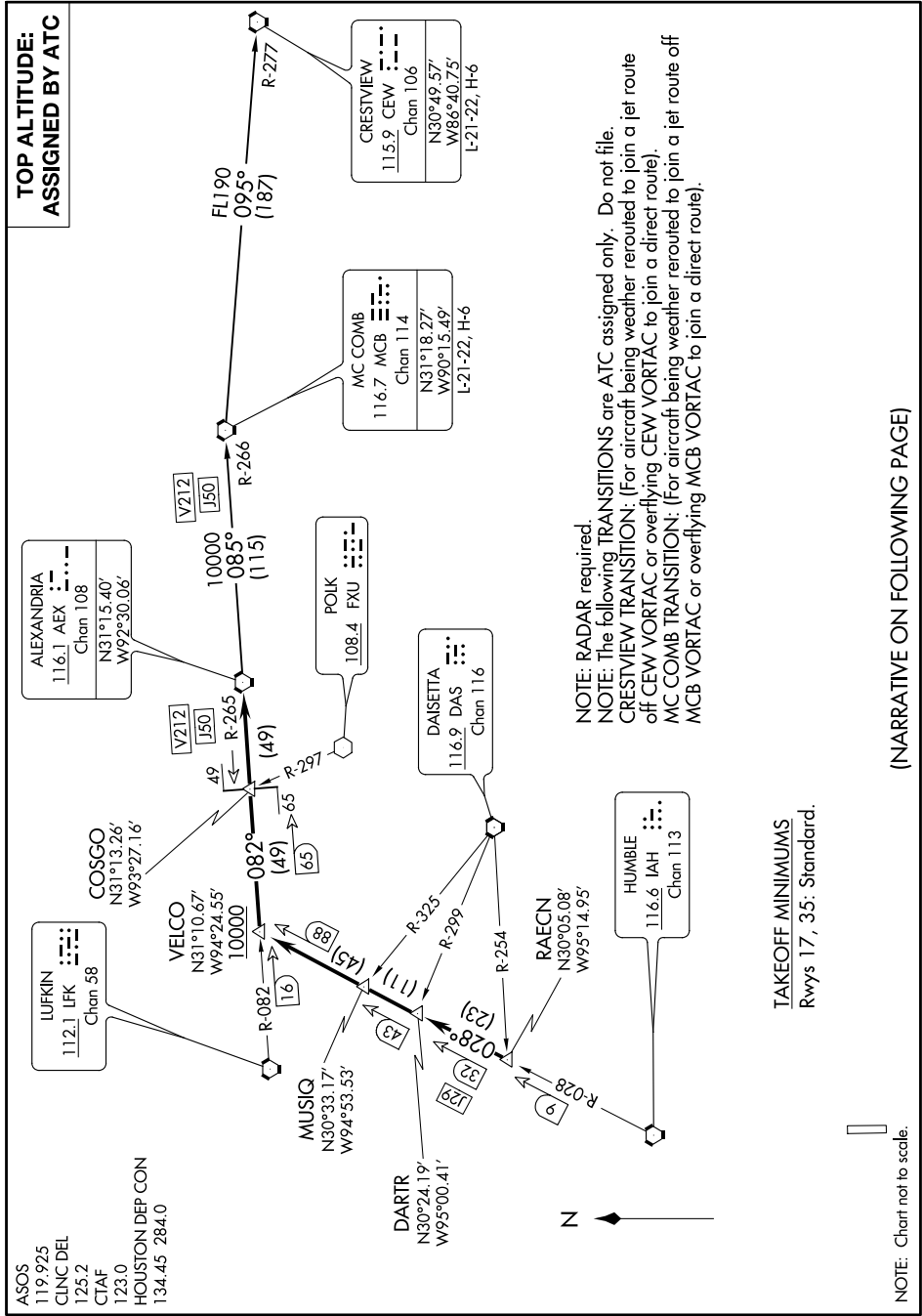


ALEXANDRIA THREE DEPARTURE



**TOP ALTITUDE:
ASSIGNED BY ATC**

ALEXANDRIA
116.1 AEX
Chan 108

N31°15.40'
W92°30.06'

CRESTVIEW
115.9 CEW
Chan 106

N30°49.57'
W86°40.75'
L-21-22, H-6

MC COMB
116.7 MCB
Chan 114

N31°18.27'
W90°15.49'
L-21-22, H-6

POLK
108.4 FXU

DAISETTA
116.9 DAS
Chan 116

LUFKIN
112.1 LFK
Chan 58

COSGO
N31°13.26'
W93°27.16'

VELCO
N31°10.67'
W94°24.55'
10000

MUSIQ
N30°33.17'
W94°53.53'

DARTR
N30°24.19'
W95°00.41'

RAECN
N30°05.08'
W95°14.95'

HUMBLE
116.6 IAH
Chan 113

NOTE: RADAR required.
NOTE: The following TRANSITIONS are ATC assigned only. Do not file.
CRESTVIEW TRANSITION: (For aircraft being weather rerouted to join a jet route off CEW VORTAC or overflying CEW VORTAC to join a direct route).
MC COMB TRANSITION: (For aircraft being weather rerouted to join a jet route off MCB VORTAC or overflying MCB VORTAC to join a direct route).

TAKEOFF MINIMUMS
Rwy 17, 35: Standard.

NOTE: Chart not to scale.

(NARRATIVE ON FOLLOWING PAGE)

ALEXANDRIA THREE DEPARTURE