

|  |                        |   |
|--|------------------------|---|
| WAAS<br>CH <b>66035</b><br><b>W13A</b> | APP CRS<br><b>129°</b> | Rwy ldg <b>4003</b><br>TDZE <b>564</b><br>Apt Elev <b>585</b> |
|--|------------------------|---|

# RNAV (GPS) RWY 13

MARSHALL COUNTY (C75)

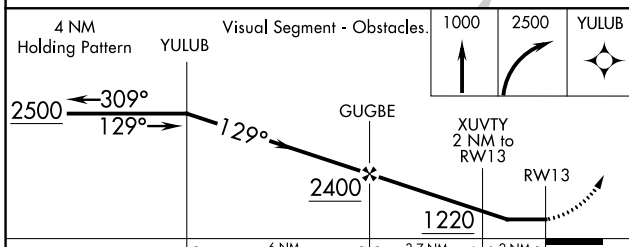
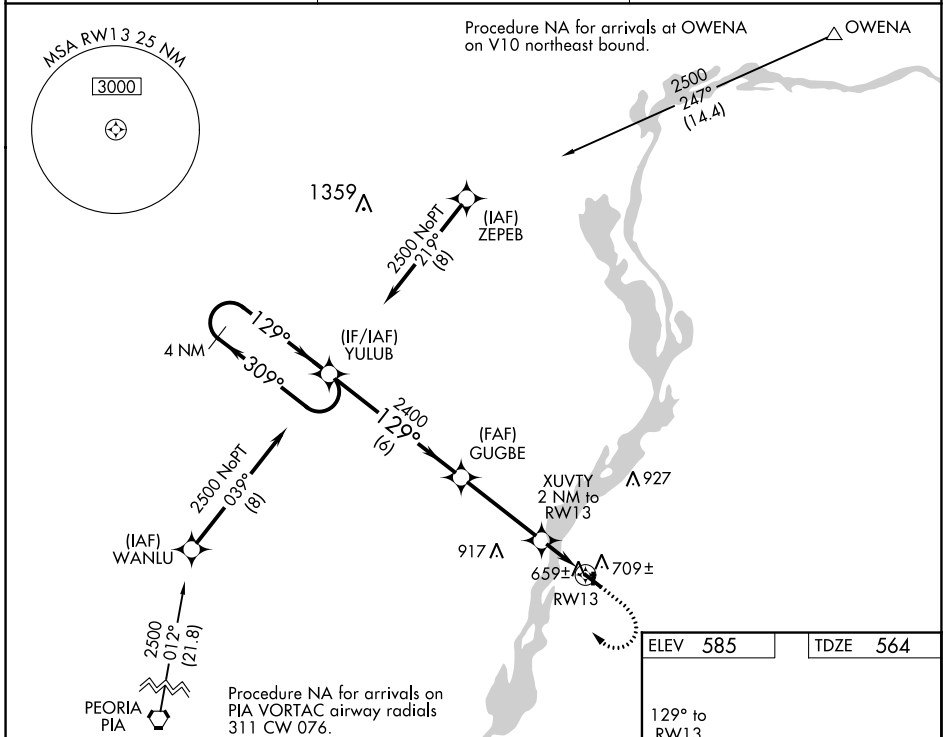
**⚠** DME/DME RNP-0.3 NA. Helicopter visibility reduction below ¾ SM NA. When local altimeter setting not received, use Peru altimeter setting and increase all MDA 80 feet and increase LP and Circling Cat C visibilities ¼ mile and LNAV Cat C visibility ½ mile. Night landing: Rwy 18, 31, 36 NA.

**MISSED APPROACH:** Climb to 1000 then climbing right turn to 2500 direct YULUB and hold.

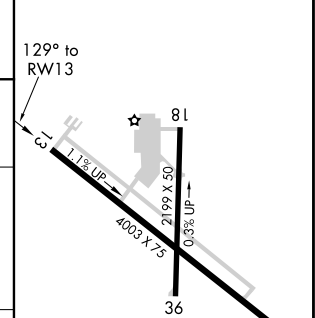
AWOS-3  
**119.425**

CHICAGO CENTER  
**124.55 307.125**

UNICOM  
**122.8 (CTAF) ①**



|          |          |
|----------|----------|
| ELEV 585 | TDZE 564 |
|----------|----------|



| CATEGORY          | A      | B           | C                       | D  |
|-------------------|--------|-------------|-------------------------|----|
| LP MDA            | 920-1  | 356 (400-1) | 920-1½<br>356 (400-1½)  | NA |
| LNAV MDA          | 960-1  | 396 (400-1) | 960-1¼<br>396 (400-1¼)  | NA |
| <b>C</b> CIRCLING | 1100-1 | 515 (600-1) | 1200-1¾<br>615 (700-1¾) | NA |

REIL Rwy 13 ①  
MIRL Rwy 13-31 ①  
LIRL Rwy 18-36

EC-3, 08 SEP 2022 to 06 OCT 2022

EC-3, 08 SEP 2022 to 06 OCT 2022