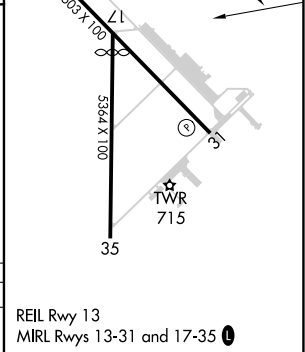
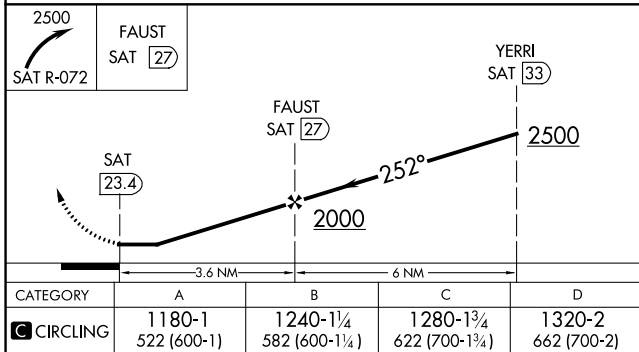
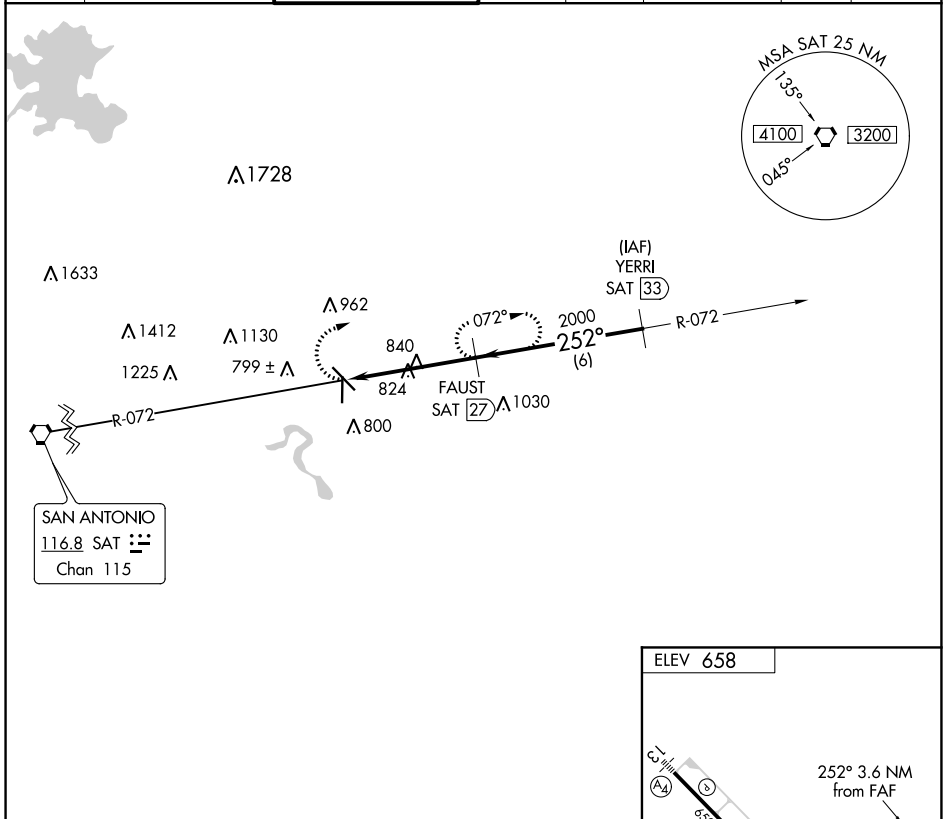


VORTAC SAT 116.8 Chan 115	APP CRS 252°	Rwy Idg TDZE Apt Elev N/A N/A 658
---	------------------------	---

VOR/DME-A
NEW BRAUNFELS NTL (BAZ)

RADAR required for procedure entry.		MISSED APPROACH: Climbing right turn to 2500 on SAT R-072 to FAUST/27 DME and hold.		
-------------------------------------	--	---	--	--

ATIS 119.325	SAN ANTONIO APP CON 124.45 335.625	NEW BRAUNFELS TOWER* 127.05 285.4	GND CON 120.175	CLNC DEL 134.75	CLNC DEL 134.75 (When twr closed)	UNICOM 122.7	CTAF 127.05
------------------------	--	---	---------------------------	---------------------------	--	------------------------	-----------------------



CATEGORY	A	B	C	D
CIRCLING	1180-1 522 (600-1)	1240-1¼ 582 (600-1¼)	1280-1¾ 622 (700-1¾)	1320-2 662 (700-2)

NEW BRAUNFELS, TEXAS
Orig-A 08NOV18

29°42'N-98°02'W

NEW BRAUNFELS NTL (BAZ)
VOR/DME-A

SC-3, 08 SEP 2022 to 06 OCT 2022

SC-3, 08 SEP 2022 to 06 OCT 2022