

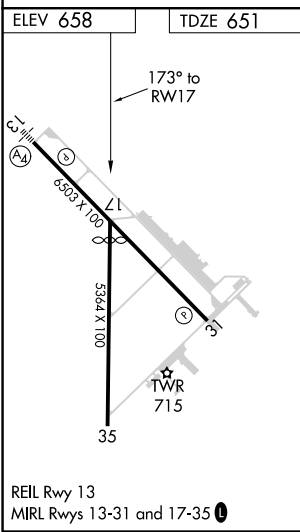
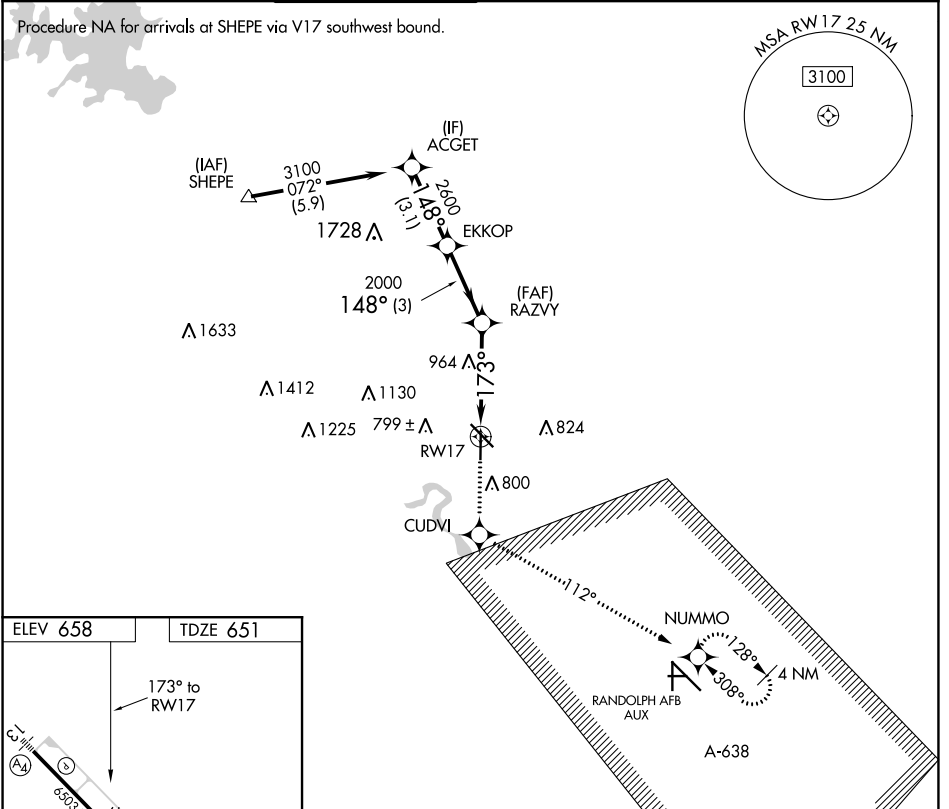
APP CRS	Rwy Idg	4842
173°	TDZE	651
	Apt Elev	658

RNAV (GPS) RWY 17

NEW BRAUNFELS NTL (BAZ)

RNP APCH.		<p>⚠ When local altimeter setting not received, use San Marcos Rgnl altimeter setting and increase all MDAs 60 feet and visibility Cat C ¼ SM. VDP NA when using San Marcos Rgnl altimeter setting.</p>		<p>MISSED APPROACH: Climb to 3500 direct CUDVI and via 112° track to NUMMO and hold, continue climb-in-hold to 3500.</p>	
-----------	--	--	--	--	--

ATIS	SAN ANTONIO APP CON	NEW BRAUNFELS TOWER*	GND CON	CLNC DEL	CLNC DEL	UNICOM	CTAF
119.325	124.45 335.625	127.05 285.4	120.175	134.75	134.75 (When twr closed)	122.7	127.05 Ⓛ



3500	CUDVI	NUMMO	ACGET
↑	✧	✧	
	Ir 112°		
		RAZVY	EKKOP
	1.6 NM to RWY 17	2000	2600
	TCH 45	3.03°	148°
	173°	3.1 NM	3.1 NM
	1.6 NM	2.5 NM	3 NM
CATEGORY	A	B	C
LNAV MDA	1220-1	569 (600-1)	1220-1½ 569 (600-1½)
			1220-1¾ 569 (600-1¾)

Procedure Turn NA

SC-3, 08 SEP 2022 to 06 OCT 2022

SC-3, 08 SEP 2022 to 06 OCT 2022