

WAAS CH <b>62805</b> <b>W35A</b>	APP CRS <b>350°</b>	Rwy Idg TDZE <b>5000</b> <b>756</b> Apt Elev <b>763</b>
--	------------------------	--

# RNAV (GPS) RWY 35

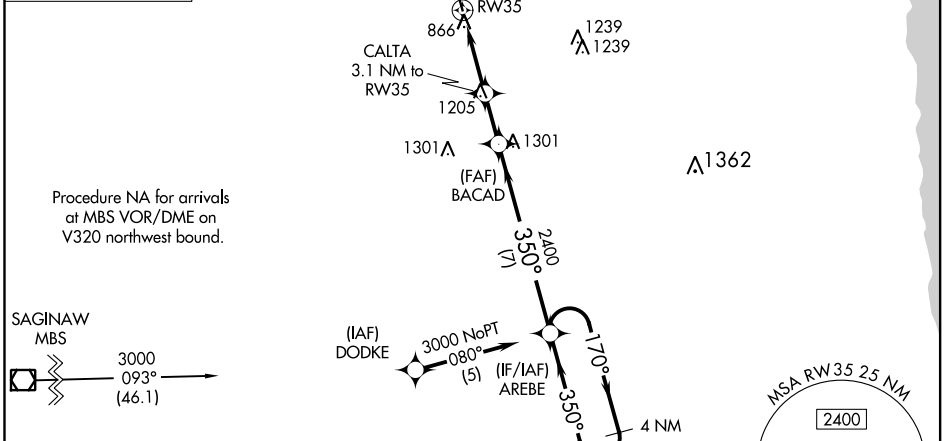
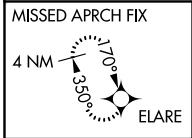
HURON COUNTY MEML (BAX)

**RNP APCH.**

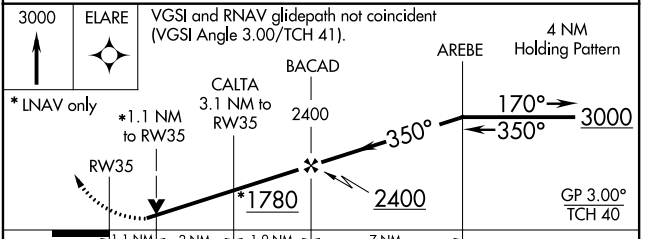
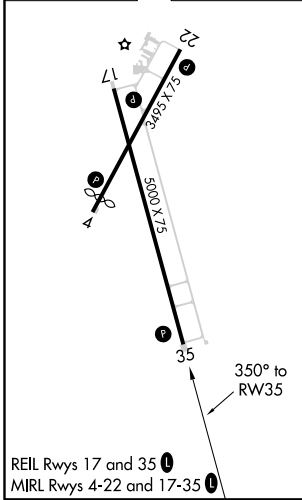
**⚠** For uncompensated Baro-VNAV systems, LNAV/VNAV NA below -16°C or above 54°C. When local altimeter setting not received, use MBS Intl altimeter setting and increase all DA 129 feet and all MDA 140 feet; increase LPV all Cats and LNAV Cat C visibility 3/8 mile. Rwy 35 helicopter visibility reduction below 3/4 SM NA. VDP and Baro/VNAV NA when using MBS Intl altimeter setting.

**MISSED APPROACH:** Climb to 3000 direct ELARE and hold.

AWOS-3 <b>118.6</b>	CLEVELAND CENTER <b>126.75 348.75</b>	UNICOM <b>123.075 (CTAF) 0</b>
------------------------	--	-----------------------------------



ELEV 763	TDZE 756
----------	----------



CATEGORY	A	B	C	D
LPV DA	1113-1 1/4	357 (400-1 1/4)		NA
LNAV/VNAV DA	1154-1 1/2	398 (400-1 1/2)		NA
LNAV MDA	1520-1 764 (800-1)	1520-1 1/4 764 (800-1 1/4)	1520-2 1/2 764 (800-2 1/2)	NA

EC-1, 08 SEP 2022 to 06 OCT 2022

EC-1, 08 SEP 2022 to 06 OCT 2022