

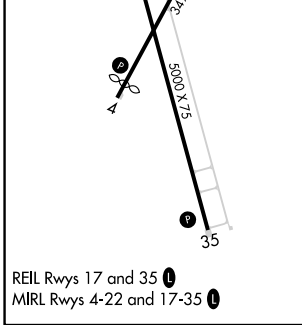
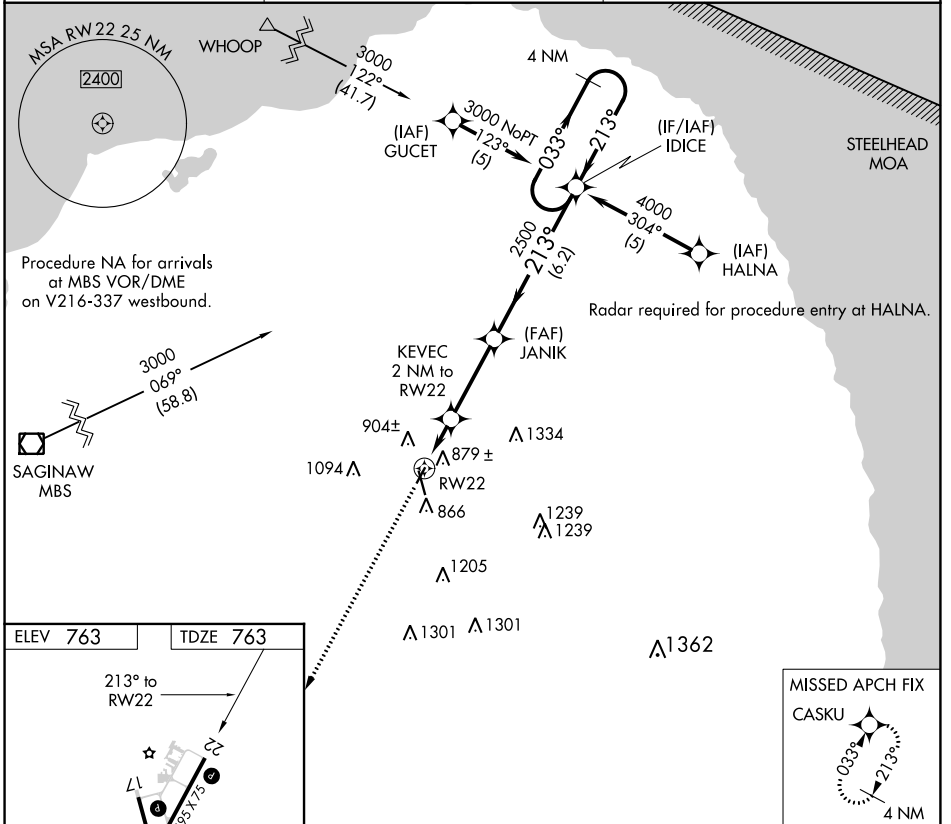
APP CRS	Rwy ldg	3495
213°	TDZE	763
	Apt Elev	763

RNAV (GPS) RWY 22

HURON COUNTY MEML (BAX)

RNP APCH.	MISSED APPROACH: Climb to 3000 direct CASKU and hold.
<p>▼ When local altimeter setting not received, use MBS Intl altimeter setting and increase all MDA 140 feet; increase LNAV Cat C visibility ½ SM. Procedure NA at night. Rwy 22 helicopter visibility reduction below 1 SM NA.</p>	

AWOS-3 118.6	CLEVELAND CENTER 126.75 348.75	UNICOM 123.075 (CTAF) 0
------------------------	--	-----------------------------------



3000	CASKU	Visual Segment - Obstacles.	IDICE	4 NM Holding Pattern
↑	✧	JANIK	033° →	← 213° 3000
	KEVEC 2 NM to RW22		213°	2500
	RW22		1440	
	2 NM	3.3 NM	6.2 NM	
CATEGORY	A	B	C	D
LNAV MDA	1140-1 377 (400-1)			NA

EC-1, 08 SEP 2022 to 06 OCT 2022

EC-1, 08 SEP 2022 to 06 OCT 2022