

APP CRS 002°	Rwy Idg 4002
	TDZE 620
	Apt Elev 620

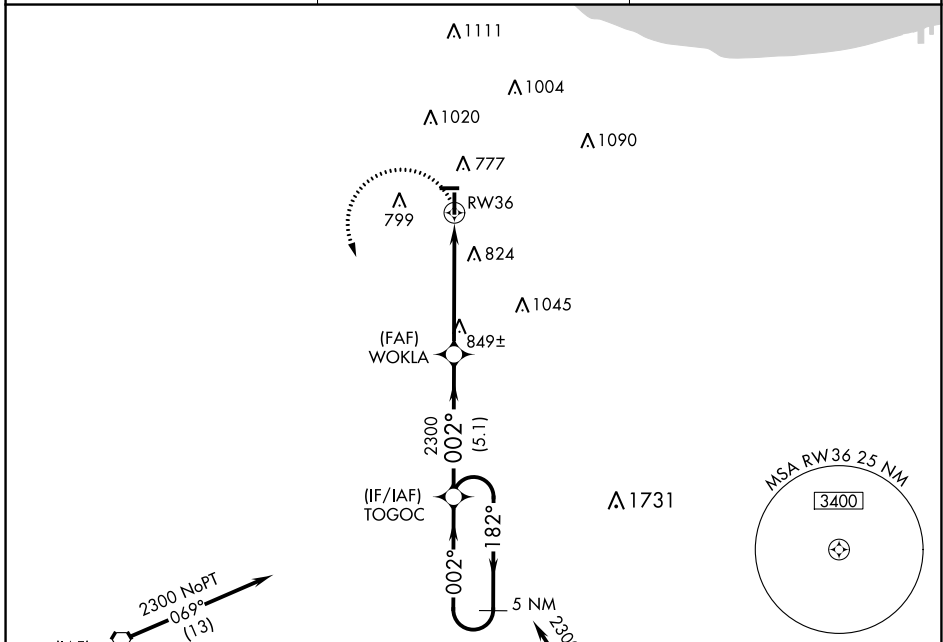
RNAV (GPS) RWY 36

LANSING MUNI (IGQ)

⚠ DME/DME RNP-0.3 NA. VDP NA when using Chicago Midway Intl altimeter setting. Circling Rwy 9 NA at night. When local altimeter setting not received, use Chicago Midway Intl altimeter setting and increase all MDAs 60 feet.

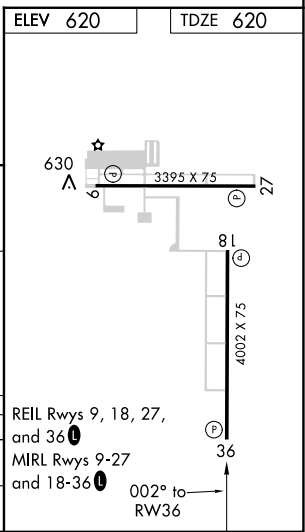
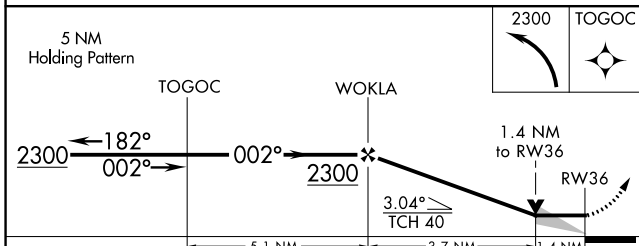
⚠ MISSED APPROACH: Climbing left turn to 2300 direct TOGO and hold.

AWOS-3PT 119.275	CHICAGO APP CON 128.2 285.6	UNICOM 122.7 (CTAF) 0
----------------------------	---------------------------------------	---------------------------------



Procedure NA for arrival on EON VORTAC airway radials 096 CW 150.

Procedure NA for arrivals at LUCIT on V7-51-97 southeast bound and V38-156 eastbound.



CATEGORY	A	B	C	D
LNNAV MDA	1100-1	480 (500-1)		NA
CIRCLING	1140-1	520 (600-1)		NA

REIL Rwy 9, 18, 27, and 36
MIRL Rwy 9-27 and 18-36
002° to RW36

EC-3, 08 SEP 2022 to 06 OCT 2022

EC-3, 08 SEP 2022 to 06 OCT 2022