

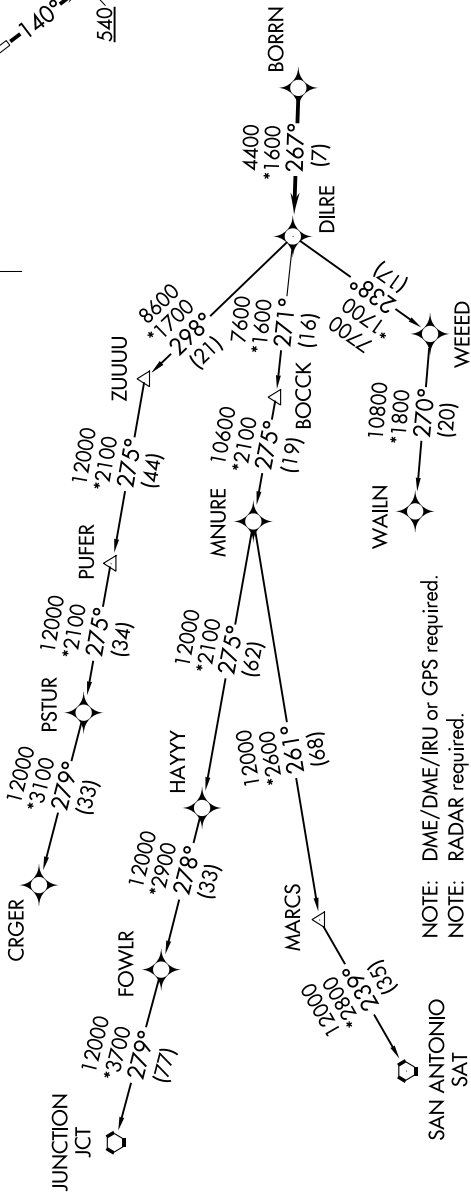
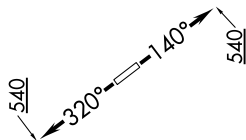
BORRN FOUR DEPARTURE (RNAV)

**TOP ALTITUDE:
ASSIGNED BY ATC**

SC-5, 08 SEP 2022 to 06 OCT 2022

CTAF
122.8
HOUSTON DEP CON
134.45 284.0

TAKEOFF MINIMUMS:
Rwy 14, 32: Standard with minimum
climb of 500' per NM to 540.



NOTE: DME/DME/IRU or GPS required.
NOTE: RADAR required.
NOTE: RNAV 1.
NOTE: CRGR TRANSITION ATC assigned only
for aircraft departing 54T, AXH, EFD, GLS,
HPY, IWS, LBX, LVJ, SGR, TME, T00, T41.

(NARRATIVE ON FOLLOWING PAGE)

NOTE: Chart not to scale.

SC-5, 08 SEP 2022 to 06 OCT 2022

BORRN FOUR DEPARTURE (RNAV)