

WESTMINSTER, MARYLAND

AL-5533 (FAA)

21140

| | | |
|--|------------------------|---|
| WAAS CH 82117 W34A | APP CRS 339° | Rwy Idg 5100 TDZE 788 Apt Elev 789 |
|--|------------------------|---|

RNAV (GPS) RWY 34

CARROLL COUNTY RGNL/JACK B POAGE FLD (DMW)

RNP APCH

▼ For uncompensated Baro-VNAV systems, LNAV/VNAV NA below -16°C (4°F) or above 54°C (130°F).

▲

MISSED APPROACH: Climb to 3000 direct UNYTS and hold

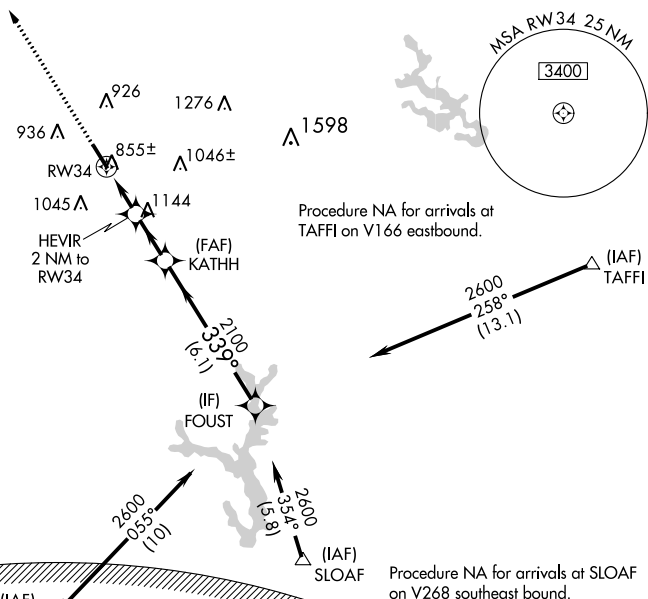
AWOS-3
121.25

POTOMAC APP CON
125.525 291.625

GCO
121.725

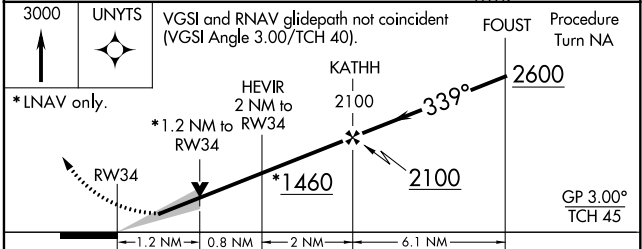
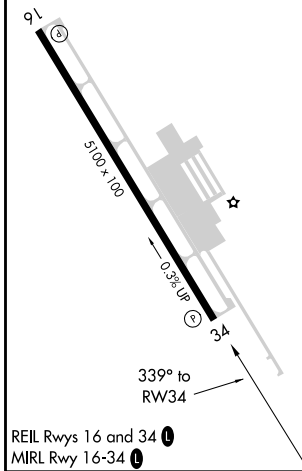
UNICOM
122.7 (CTAF) 0

MISSED APCH FIX



| | |
|----------|----------|
| ELEV 789 | TDZE 788 |
|----------|----------|

WASHINGTON DC METROPOLITAN SFRA
**WARNING -- WASHINGTON DC SFRA.
 CTC POTOMAC APP CON**



| CATEGORY | A | B | C | D |
|--------------|-----------------------|-----------------------|-----------------------|----|
| LPV DA | 988-1 200 (200-1) | | | NA |
| LNAV/VNAV DA | 1105-1½ 317 (400-1½) | | | NA |
| LNAV MDA | 1180-1 392 (400-1) | | | NA |
| CIRCLING | 1320-1 531 (600-1) | 1400-1 611 (700-1) | 1500-2 711 (800-2) | NA |

WESTMINSTER, MARYLAND
Amdt 1C 20MAY21

CARROLL COUNTY RGNL/JACK B POAGE FLD (DMW)
39°36'N-77°00'W

RNAV (GPS) RWY 34

NE-3, 08 SEP 2022 to 06 OCT 2022

NE-3, 08 SEP 2022 to 06 OCT 2022