

**TOP ALTITUDE:
ASSIGNED BY ATC**

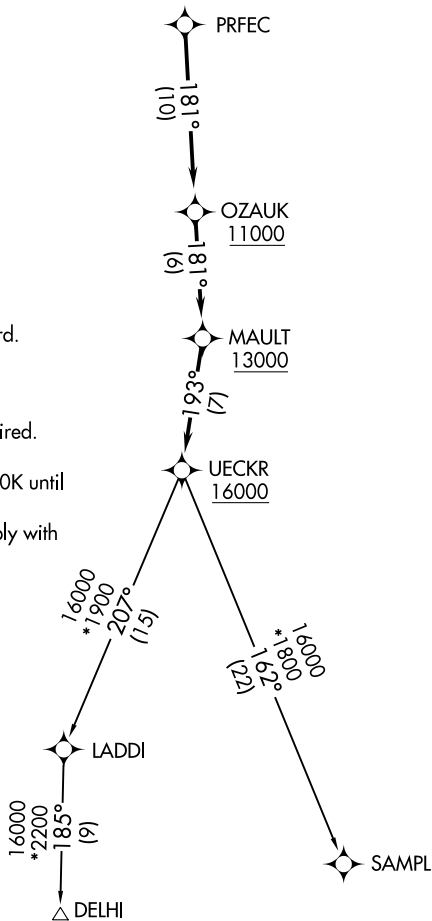
ATIS
127.175
CLNC DEL
121.875
118.6 (When twr closed)
GND CON
121.875
MILWAUKEE DEP CON
135.875 317.725



TAKEOFF MINIMUMS

Rwys 7L/R, 15, 25L/R, 33: Standard.

- NOTE: RNAV 1.
- NOTE: GPS or DME/DME/IRU required.
- NOTE: RADAR required.
- NOTE: Turbojet aircraft maintain 250K until advised by ATC.
- NOTE: Notify ATC if unable to comply with crossing restrictions.



NOTE: Chart not to scale.

DEPARTURE ROUTE DESCRIPTION

Climb on assigned heading for RADAR vectors to PRFEC, thence...

...on track 181° to cross OZAUK at or above 11000, then on track 181° to cross MAULT at or above 13000, then on track 193° to cross UECKR at or above 16000, then on (transition). Maintain ATC assigned altitude, expect filed altitude ten minutes after departure.

DELHI TRANSITION (UECKR6.DELHI)

SAMPL TRANSITION (UECKR6.SAMPL)