

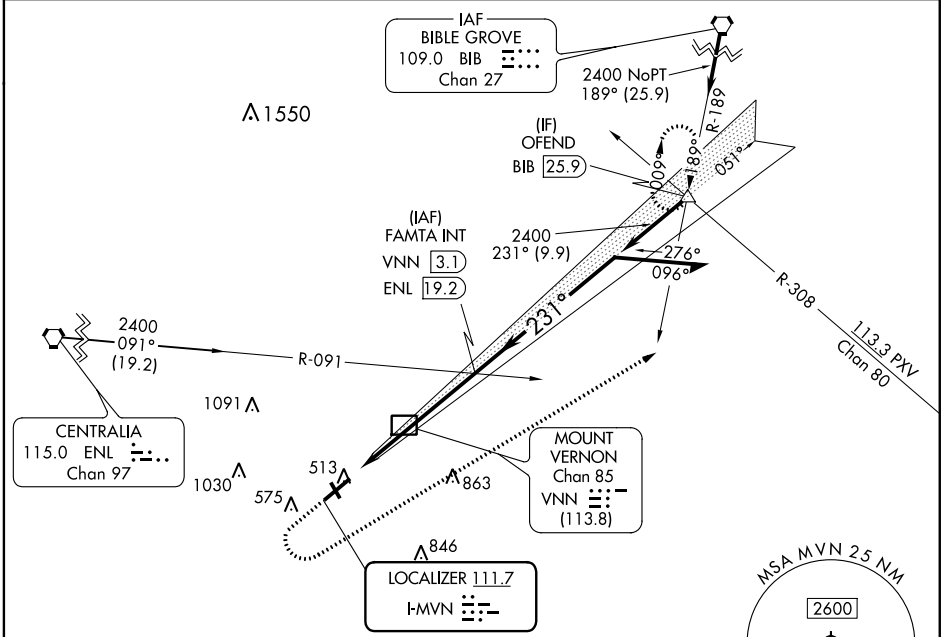
LOC I-MVN 111.7	APP CRS 231°	Rwy Idg TDZE Apt Elev	5572 471 480
---------------------------	------------------------	-----------------------------	---

ILS or LOC RWY 23

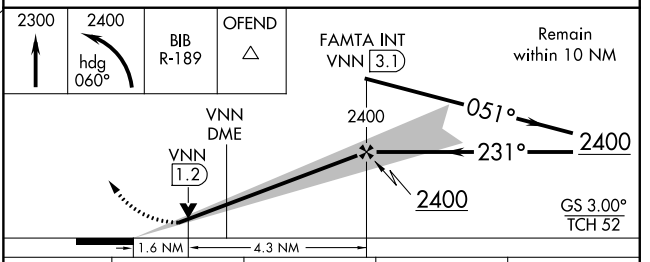
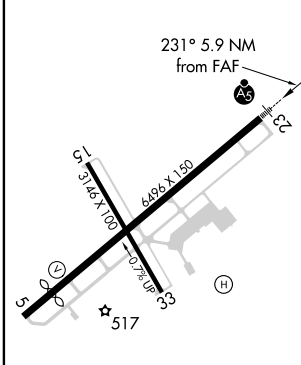
MOUNT VERNON (MVN)

<p>⚠ Circling Rwy 15, 33 NA at night.</p>	<p>MALSR</p>	<p>MISSED APPROACH: Climb to 2300 then climbing left turn to 2400 on heading 060° and on BIB VORTAC R-189 to OFEND and hold.</p>
--	---------------------	---

AWOS-3PT 118.2	KANSAS CITY CENTER 127.7 351.825	UNICOM 123.0 (CTAF) 0
--------------------------	--	---------------------------------



ELEV 480	D	TDZE 471
----------	----------	----------



	CATEGORY	A	B	C	D
S-ILS 23		671-1/2 200 (200-1/2)			
S-LOC 23		1020-1/2	549 (600-1/2)	1020-1 1/8	549 (600-1 1/8)
C CIRCLING		1020-1	540 (600-1)	1140-1 3/4	1380-3
				660 (700-1 3/4)	900 (1000-3)

FAF to MAP 5.9 NM					
Knots	60	90	120	150	180
Min:Sec	5:54	3:56	2:57	2:22	1:58

EC-3, 08 SEP 2022 to 06 OCT 2022

EC-3, 08 SEP 2022 to 06 OCT 2022