

WAAS CH <b>40208</b> <b>W35A</b>	APP CRS <b>355°</b>	Rwy Idg TDZE <b>163</b> Apt Elev <b>214</b>
--	------------------------	---

# RNAV (GPS) RWY 35

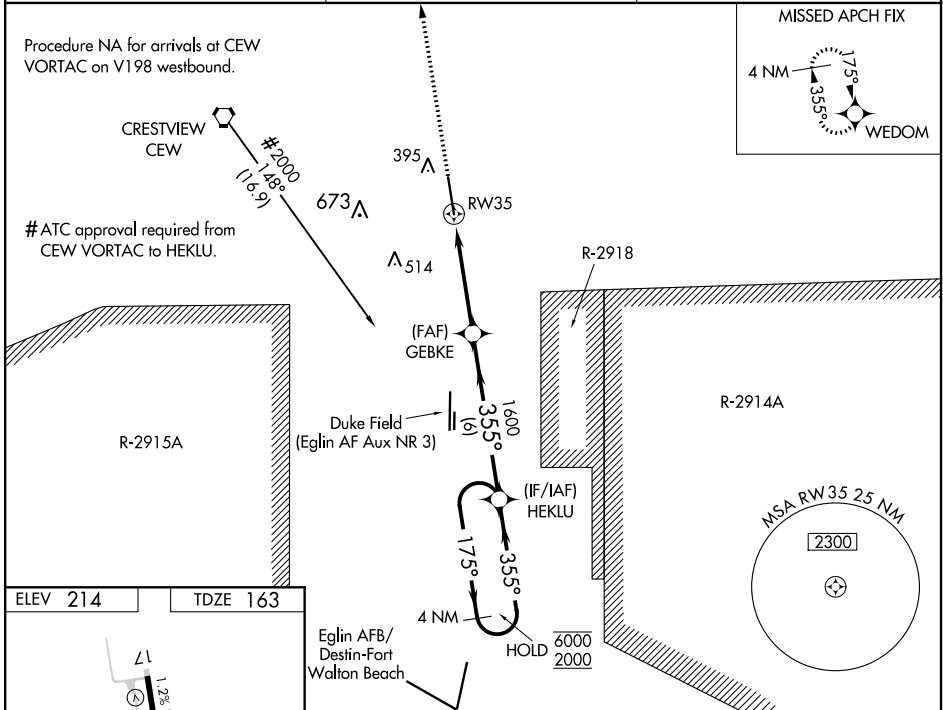
BOB SIKES (CEW)

RNP APCH.

Baro-VNAV and VDP NA when using Eglin AFB altimeter setting. Rwy 35 helicopter visibility reduction below  $\frac{3}{4}$  SM NA. For uncompensated Baro-VNAV systems, LNAV/VNAV NA below -5°C or above 54°C. When local altimeter setting not received, use Eglin AFB altimeter setting and increase LPV DA to 509, LNAV/VNAV DA to 550, and all MDA 60 feet, increase LNAV Cat C/D visibility  $\frac{1}{2}$  SM.

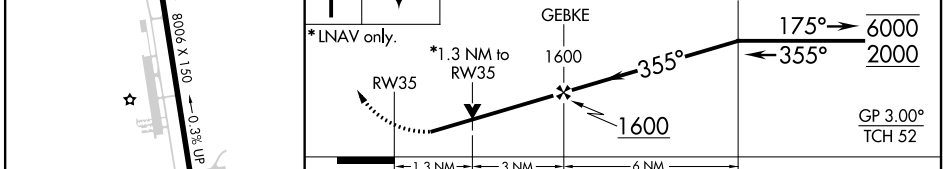
MISSED APPROACH: Climb to 2000 direct WEDOM and hold.

ASOS <b>119.275</b>	EGLIN APP CON <b>124.05 284.65</b>	UNICOM <b>122.95 (CTAF) 0</b>
------------------------	---------------------------------------	----------------------------------



ELEV 214 TDZE 163

2000 WEDOM VGSI and RNAV glidepath not coincident (VGSI Angle 3.00/TCH 62). 4 NM Holding Pattern HEKLU



CATEGORY	A	B	C	D
LPV DA		450-1	287 (300-1)	
LNAV/VNAV DA		491-1 $\frac{1}{4}$	328 (300-1 $\frac{1}{4}$ )	
LNAV MDA	640-1	477 (500-1)	640-1 $\frac{3}{8}$	477 (500-1 $\frac{3}{8}$ )

SE-3, 08 SEP 2022 to 06 OCT 2022

SE-3, 08 SEP 2022 to 06 OCT 2022