

WAAS CH 63119 W06A	APP CRS 063°	Rwy Idg TDZE 394 Apt Elev 398	5013
--	------------------------	---	-------------

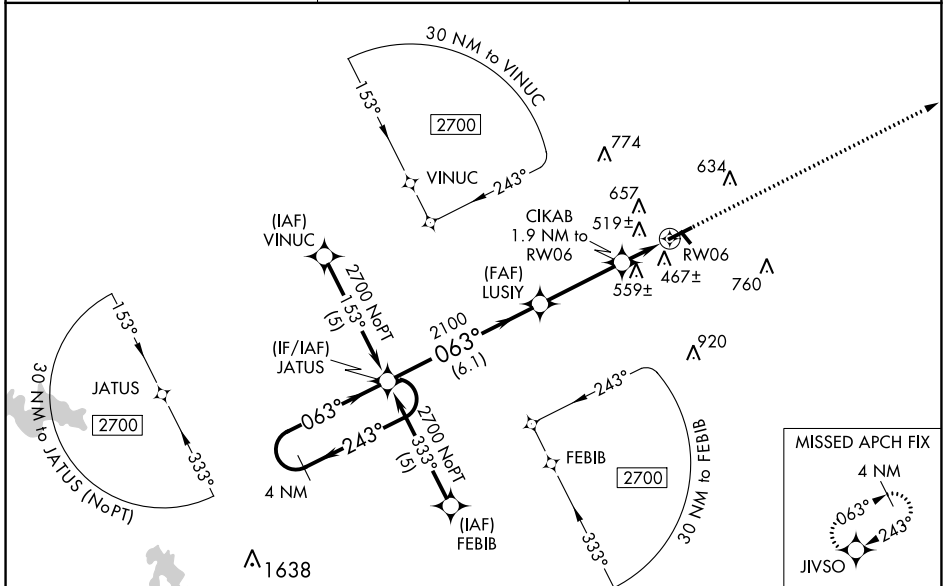
RNAV (GPS) RWY 6

HARRISBURG-RALEIGH (HSB)

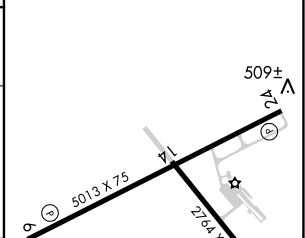
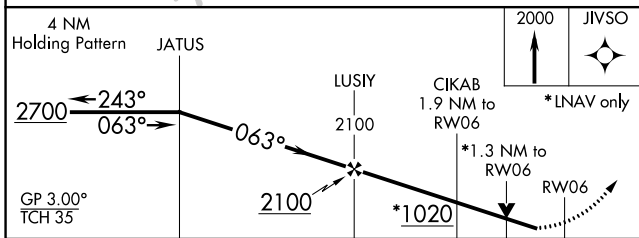
⚠ Baro-VNAV NA when using Williamson County Rgnl altimeter setting. For uncompensated Baro-VNAV systems, LNAV/VNAV NA below -15°C (5°F) or above 48°C (118°F). DME/DME RNP-0.3 NA. Visibility reduction by helicopters NA. When local altimeter setting not received, use Marion altimeter setting: increase LPV DA to 744 feet; increase LNAV/VNAV DA to 1020 feet; increase all MDAs 80 feet and LNAV visibility Cat C/D ¼ SM and Circling visibility Cat C/D ¼ SM. VDP NA with Williamson County Rgnl altimeter setting.

MISSED APPROACH:
Climb to 2000 direct JIVSO and hold.

AWOS-3 135.925	KANSAS CITY CENTER 127.475 346.275	UNICOM 122.8 (CTAF) 0
--------------------------	--	---------------------------------



ELEV 398	TDZE 394
-----------------	-----------------



CATEGORY	A	B	C	D
LPV DA		682-1	288 (300-1)	
LNAV/VNAV DA		958-2	564 (600-2)	
LNAV MDA	820-1	426 (500-1)	820-1¼	426 (500-1¼)
CIRCLING	900-1 502 (600-1)	1020-1 622 (700-1)	1020-1¾ 622 (700-1¾)	1080-2¼ 682 (700-2¼)

REIL Rwy 6 and 24 **0**
MIRL Rwy 6-24 and 14-32 **0**

EC-3, 08 SEP 2022 to 06 OCT 2022

EC-3, 08 SEP 2022 to 06 OCT 2022