

LOC/DME I-AIK 109.9 Chan 36	APP CRS 066°	Rwy Idg 5500 TDZE 515 Apt Elev 529
---	------------------------	---

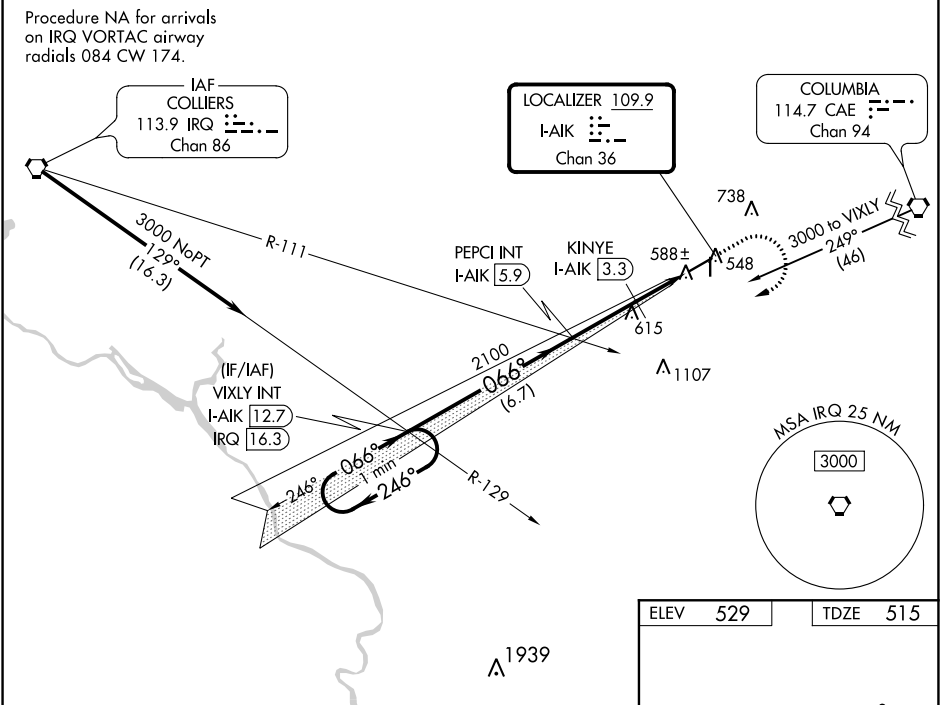
ILS or LOC/DME RWY 7

AIKEN RGNL (AIK)

V VDP NA with Augusta Rgnl at Bush Fld altimeter setting.
NA When local altimeter setting not received, use Augusta Rgnl at Bush Fld altimeter setting: increase S-ILS 7 all Cats DAs to 819 feet and all Cats visibility ¼ SM; increase all MDAs 120 feet and S-LOC 7 Cats C/D visibility ¾ SM and Circling Cat C visibility ¼ SM.

MISSED APPROACH: Climb to 1100 then climbing right turn to 3000 on heading 276° and I-AIK SW course (246°) to VIXLY INT/I-AIK 12.7 DME and hold.

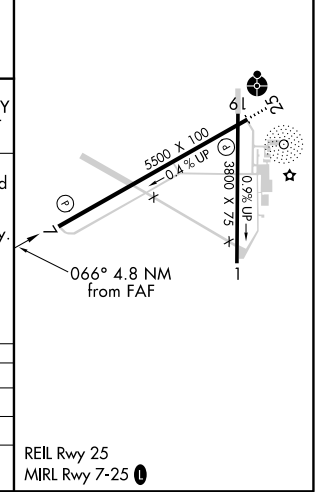
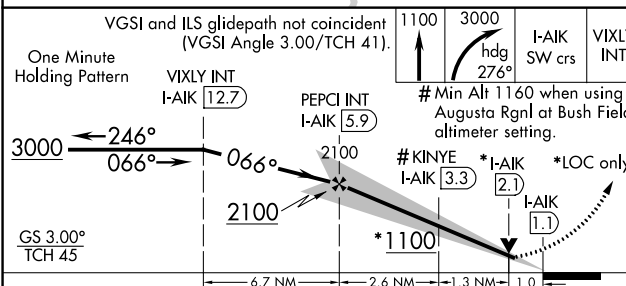
AWOS-3 118.025	AUGUSTA APP CON * 119.15 284.625	CLNC DEL 126.075	UNICOM 122.8 (CTAF)
--------------------------	--	----------------------------	-------------------------------



SE-2, 08 SEP 2022 to 06 OCT 2022

SE-2, 08 SEP 2022 to 06 OCT 2022

ELEV 529	TDZE 515
-----------------	-----------------



CATEGORY	A	B	C	D
S-ILS 7		715-¾	200 (200-¾)	
S-LOC 7		880-1	365 (400-1)	
CIRCLING	980-1 451 (500-1)	1000-1 471 (500-1)	1140-1¾ 611 (700-1¾)	1420-3 891 (900-3)