


LOC I-DNV 108.5	APP CRS 209°	Rwy Idg 6006
		TDZE 697
		Apt Elev 697

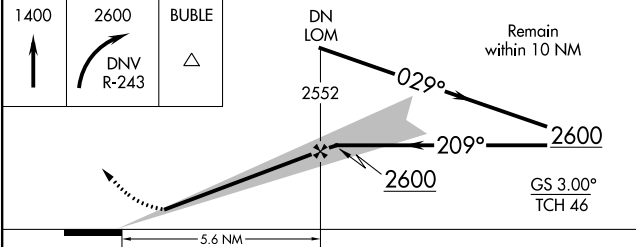
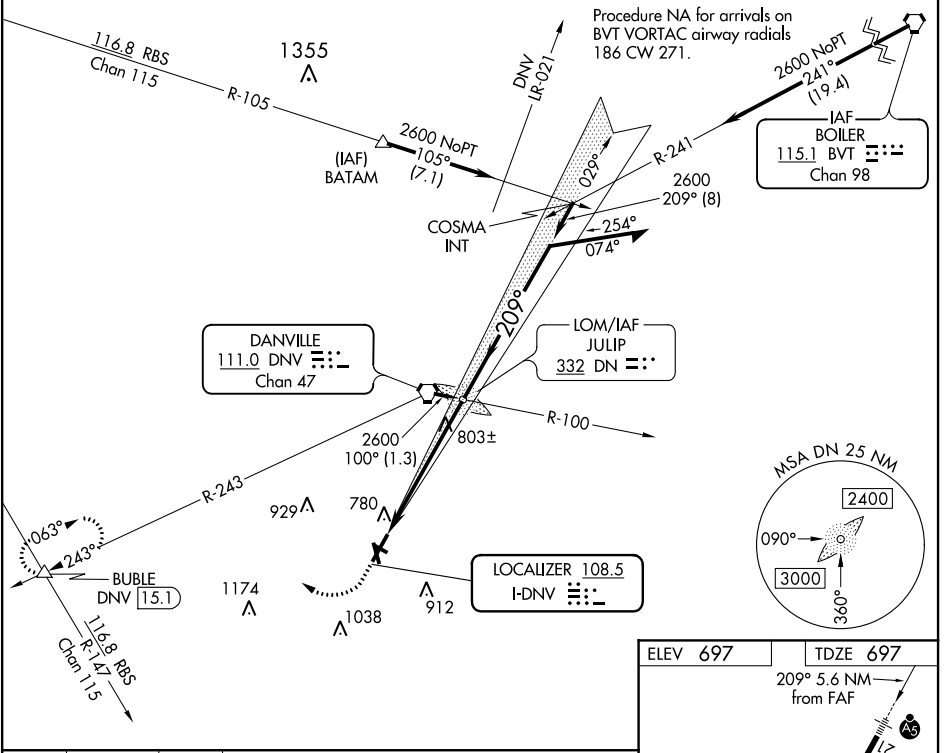
ILS or LOC RWY 21

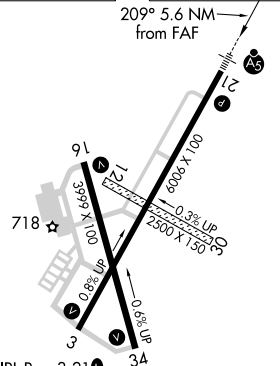
VERMILION RGNL (DNV)

⚠ When local altimeter setting not received, use University of Illinois/Willard altimeter setting and increase DA to 981 feet, and all MDAs 100 feet; increase Circling Cat C visibility ¼ SM and Cat D visibility ½ SM. Circling NA to Rwys 12 and 30.

MALSR  MISSED APPROACH: Climb to 1400, then climbing right turn to 2600 via DNV R-243 to BUBLE INT and hold.

AWOS-3 119.275	CHAMPAIGN APP CON * 121.35 285.65	CLNC DEL 121.7	UNICOM 122.7 (CTAF) 0
--------------------------	---------------------------------------------	--------------------------	---------------------------------



ELEV 697	TDZE 697
209° 5.6 NM from FAF	
	
HIRL Rwy 3-21 \bullet	
MIRL Rwy 16-34 \bullet	
REIL Rwys 16 and 34 \bullet	
FAF to MAP 5.6 NM	
Knots	60 90 120 150 180
Min:Sec	5:36 3:44 2:48 2:14 1:52

CATEGORY	A	B	C	D
S-ILS 21	897-½ 200 (200-½)			
S-LOC 21	1080-½	383 (400-½)	1080-¾	383 (400-¾)
CIRCLING	1160-1 463 (500-1)	1240-1½ 543 (600-1½)	1340-2 643 (700-2)	