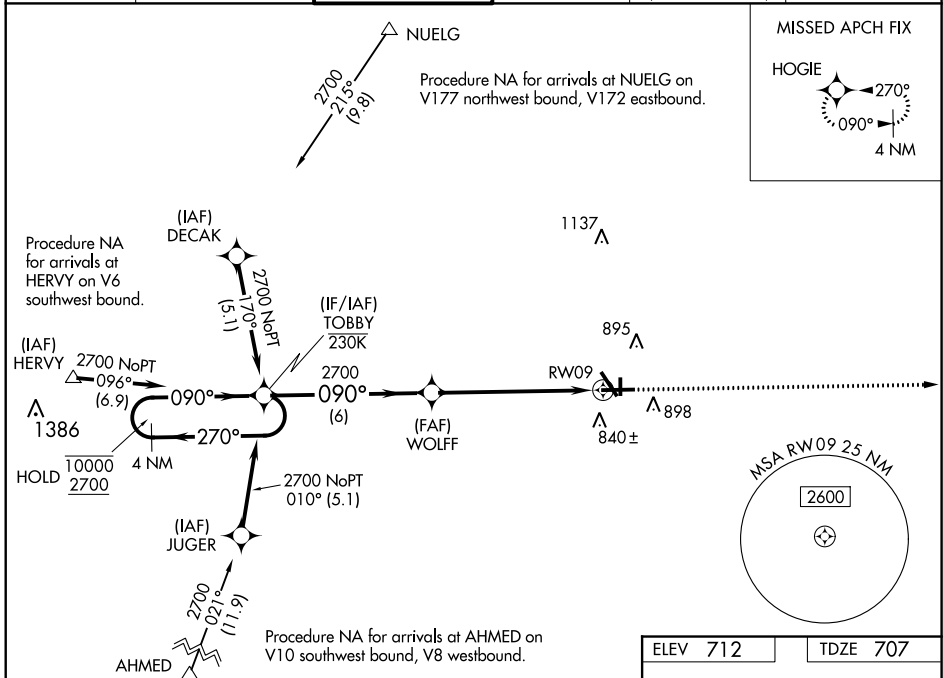


WAAS CH <b>45522</b> <b>W09A</b>	APP CRS <b>090°</b>	Rwy Idg <b>6501</b> TDZE <b>707</b> Apt Elev <b>712</b>
--	------------------------	---

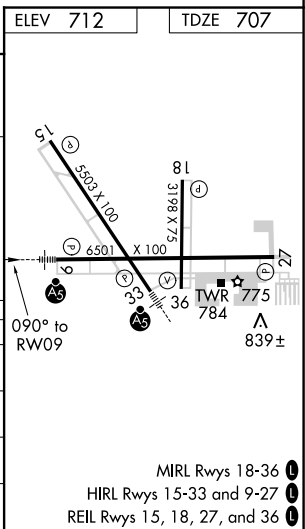
# RNAV (GPS) RWY 9

AURORA MUNI (A.R.)

RNP APCH - GPS.				MALSRL	MISSED APPROACH: Climb to 2500 direct HOGIE and hold.
<p>▼ For uncalibrated Baro-VNAV systems, LNAV/VNAV NA below -20°C or above 54°C. For inop ALS, increase LNAV Cat C/D visibility to 1½ SM.</p>					
ATIS <b>125.85</b>	CHICAGO APP CON <b>133.5 349.0</b>	AURORA TOWER* <b>120.6</b> (CTAF) <b>0</b>	GND CON <b>121.7</b>	CLNC DEL <b>121.7</b> (When tower closed)	UNICOM <b>122.95 123.5</b>



4 NM Holding Pattern		TOBBY	WOLFF	2500 HOGIE
GP 3.00° TCH 45		*LNAV only.		
10000 ← 270°		*1.5 NM to RW09		
2700 → 090°		RW09		
6 NM		4.6 NM		1.5 NM
CATEGORY	A	B	C	D
LPV DA	957-½		250 (300-½)	
LNAV/VNAV DA	1035-½		328 (400-½)	
LNAV MDA	1220-½ 513 (600-½)		1220-1 513 (600-1)	
CIRCLING	1220-1 508 (600-1)		1300-1½ 588 (600-1½) 1320-2 608 (700-2)	



EC-3, 08 SEP 2022 to 06 OCT 2022

EC-3, 08 SEP 2022 to 06 OCT 2022