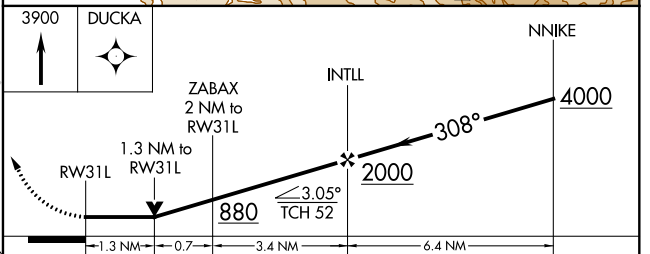
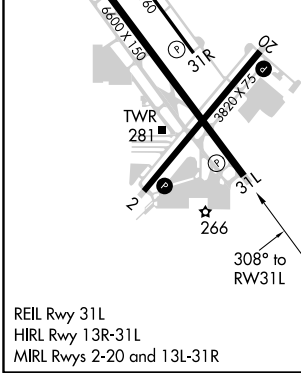
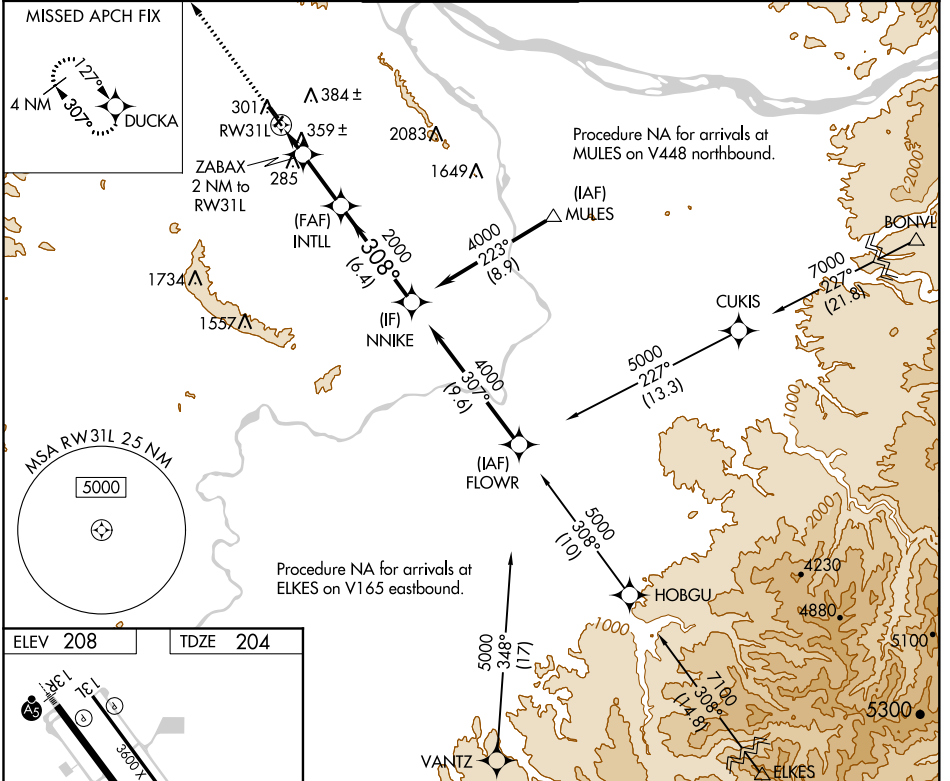


| | | |
|-------------|----------|-------------|
| APP CRS | Rwy Idg | 6600 |
| 308° | TDZE | 204 |
| | Apt Elev | 208 |

RNAV (GPS) RWY 31L

PORTLAND-HILLSBORO (HIO)

| | | | | |
|--|----------------------|---|--------------|---------------|
| RNP APCH. | | MISSED APPROACH: Climb to 3900 direct DUCKA and hold. | | |
| <p>▽ Circling to Rwy 13L, 31R NA at night. Rwy 31L helicopter visibility reduction below 3/4 SM NA.</p> | | | | |
| ATIS | PORTLAND APP CON | HILLSBORO TOWER ★ | GND CON | UNICOM |
| 127.65 | 126.0 269.175 | 119.3 (CTAF) 239.3 | 121.7 | 122.95 |



| CATEGORY | A | B | C | D |
|-------------------|-------------------|-------------------|---------------------------|---------------------------|
| LNAV MDA | 660-1 456 (500-1) | | 660-1 3/8 456 (500-1 3/8) | |
| C CIRCLING | 680-1 472 (500-1) | 720-1 512 (600-1) | 720-1 1/2 512 (600-1 1/2) | 980-2 1/2 772 (800-2 1/2) |

NW-1, 08 SEP 2022 to 06 OCT 2022

NW-1, 08 SEP 2022 to 06 OCT 2022