

LOC I-HIO 110.7	APP CRS 128°	Rwy Idg TDZE Apt Elev	6600 203 208
---------------------------	------------------------	-----------------------------	---

ILS or LOC RWY 13R

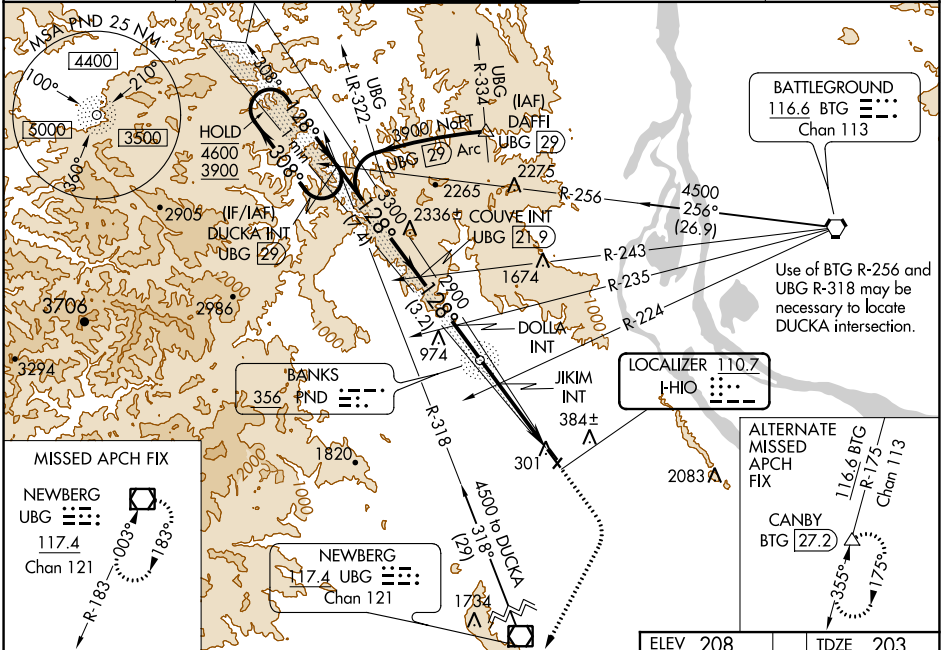
PORTLAND-HILLSBORO (HIO)

⚠ Circling to Rwy 13L, 31R NA at night. Inop table does not apply to S-LOC Rwy 13R all Cats. For inop ALS, increase JKIM fix minimums Cat C/D visibility to 1 3/8 SM.

MALS
AS

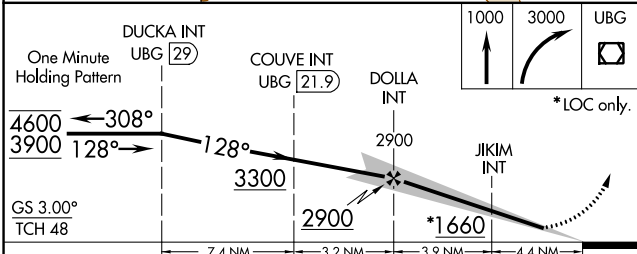
MISSED APPROACH: Climb to 1000 then climbing right turn to 3000 direct UBG VOR/DME and hold. Continue climb-in-hold to 3000.

ATIS 127.65	PORTLAND APP CON 126.0 269.175	HILLSBORO TOWER * 119.3 (CTAF) 239.3	GND CON 121.7	UNICOM 122.95
-----------------------	--	--	-------------------------	-------------------------

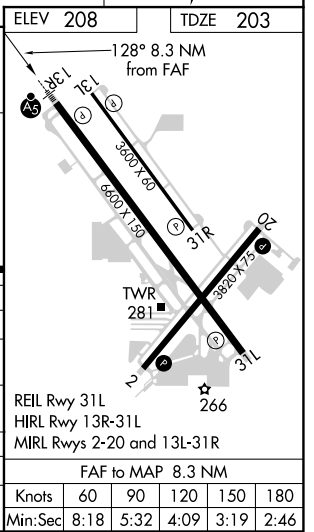


NW-1, 08 SEP 2022 to 06 OCT 2022

NW-1, 08 SEP 2022 to 06 OCT 2022



CATEGORY	A	B	C	D
S-ILS 13R	403/24 200 (200-1/2)			
S-LOC 13R	1660/60 1457 (1500-1 1/4)	1660-1 1/2 1457 (1500-1 1/2)	1660-3	1457 (1500-3)
C CIRCLING	1660-1 1/4 1452 (1500-1 1/4)	1660-1 1/2 1452 (1500-1 1/2)	1660-3	1452 (1500-3)
JKIM FIX MINIMUMS (DUAL VOR RECEIVERS REQUIRED)				
S-LOC 13R	680/24	477 (500-1/2)	680/50	477 (500-1)
C CIRCLING	680-1 472 (500-1)	720-1 512 (600-1)	720-1 1/2 512 (600-1 1/2)	980-2 1/2 772 (800-2 1/2)



ELEV 208	TDZE 203
FAF to MAP 8.3 NM	
Knots	60 90 120 150 180
Min:Sec	8:18 5:32 4:09 3:19 2:46