


WAAS CH <b>65621</b> <b>W04A</b>	APP CRS <b>045°</b>	Rwy Idg <b>5130</b> TDZE <b>51</b> Apt Elev <b>53</b>
--	------------------------	---

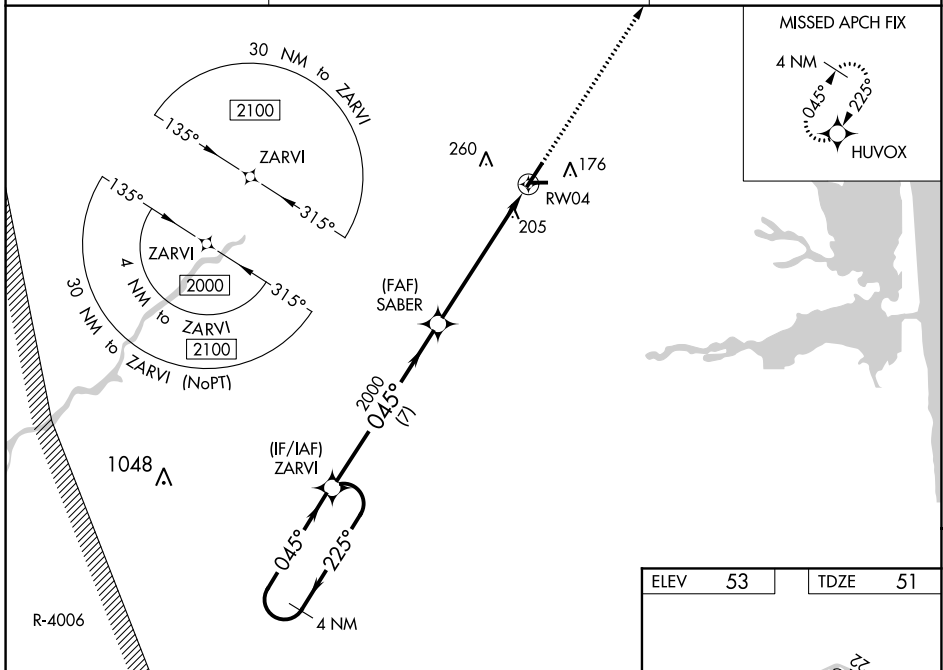
# RNAV (GPS) RWY 4

DELAWARE COASTAL (GED)

**⚠ DME/DME RNP-0.3 NA.** When local altimeter setting not received, use Salisbury altimeter setting and increase LPV DA to 353 feet, LNAV/VNAV DA to 555 feet, increase all MDA 60 feet.  
**⚠ Increase LNAV/VNAV all Cats visibility to 1 1/2 mile, LNAV Cats C/D visibility to 1 1/4 mile and increase Circling Cat C visibility to 2 miles and Cat D visibility to 2 1/4 miles.** For uncompensated Baro-VNAV systems, LNAV/VNAV NA below -13°C (9°F) or above 54°C (130°F).  
 Baro-VNAV and VDP NA when using Salisbury altimeter setting. For inoperative MALS increase LNAV/VNAV all Cats and LNAV Cats C/D visibility 1/4 mile. For inoperative MALS when using Salisbury altimeter increase LPV visibility all Cats, LNAV/VNAV and LNAV Cat D 1/4 mile. Night Landing: Rwy 10, 28 NA.

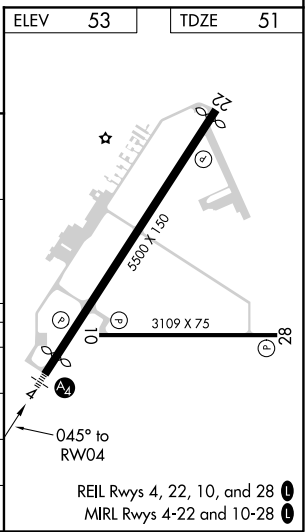
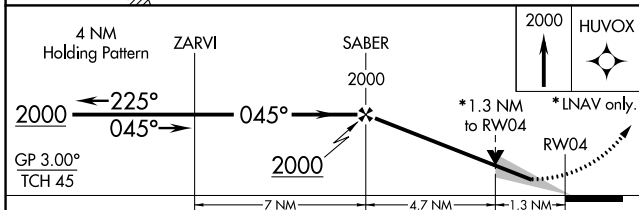
**MALS**  
 MISSED APPROACH:  
 Climb to 2000 direct HUVOX and hold.

ASOS <b>118.375</b>	DOVER APP CON <b>132.425 257.875</b>	UNICOM <b>123.0 (CTAF) 1</b>
------------------------	---	---------------------------------



NE-3, 08 SEP 2022 to 06 OCT 2022

NE-3, 08 SEP 2022 to 06 OCT 2022



CATEGORY	A	B	C	D
LPV DA		301-3/4	250 (300-3/4)	
LNAV/VNAV DA		503-1 1/4	452 (500-1 1/4)	
LNAV MDA	520-3/4	469 (500-3/4)	520-1 1/8	469 (500-1 1/8)
<b>C</b> CIRCLING	560-1 507 (600-1)	580-1 527 (600-1)	720-1 3/4 667 (700-1 3/4)	720-2 667 (700-2)