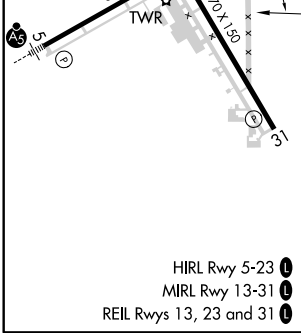
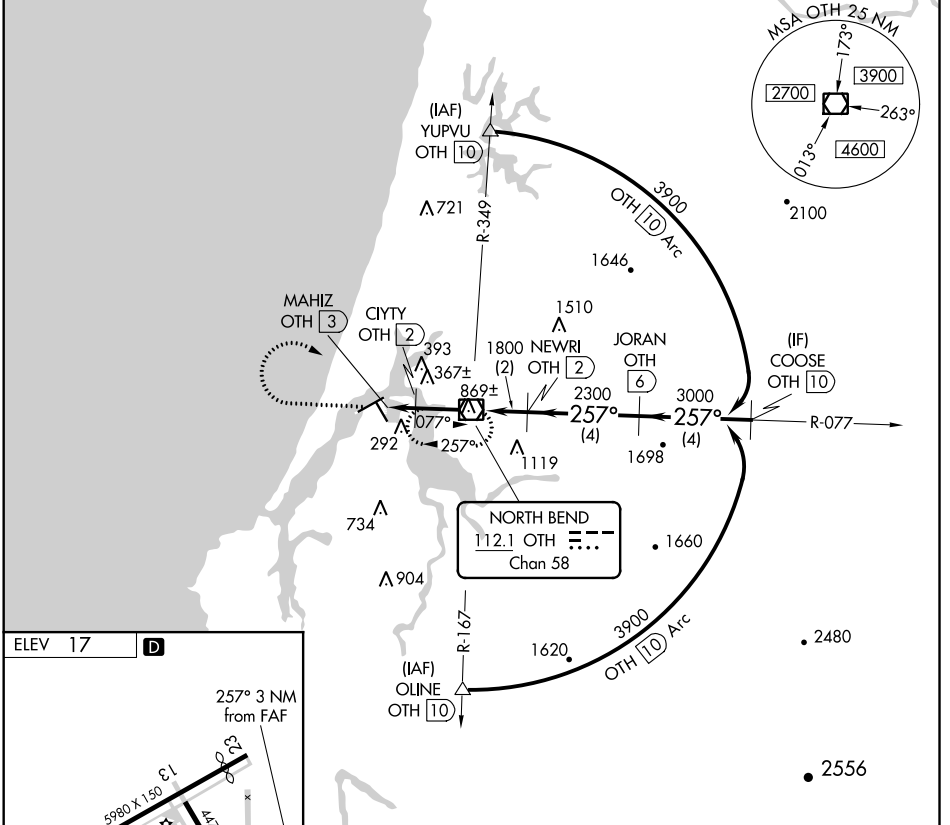


VOR/DME OTH 112.1 Chan 58	APP CRS 257°	Rwy Idg TDZE Apt Elev	N/A N/A 17
---	------------------------	-----------------------------	---------------------------------------

VOR-B
SOUTHWEST OREGON RGNL (OTH)

DME required.		MISSED APPROACH: Climb to 2300 then climbing right turn to 3600 direct OTH VOR/DME and hold.	
AWOS-3PT 135.075	SEATTLE CENTER 127.55 254.35	NORTH BEND TOWER* 118.45 (CTAF) 0	GND CON 127.1



	2300	3600	OTH				
	↑	↷	☐				
				NEWRI OTH (2)	JORAN OTH (6)	COOSE OTH (10)	
							3900
							257°
							3000
							2300
							1800
							1060
	1 NM	2 NM	2 NM	4 NM	4 NM		
CATEGORY	A	B	C	D			
CIRCLING	700-1 683 (700-1)	820-1 803 (900-1)	1100-3 1083 (1100-3)	1180-3 1163 (1200-3)			

NW-1, 08 SEP 2022 to 06 OCT 2022

NW-1, 08 SEP 2022 to 06 OCT 2022