

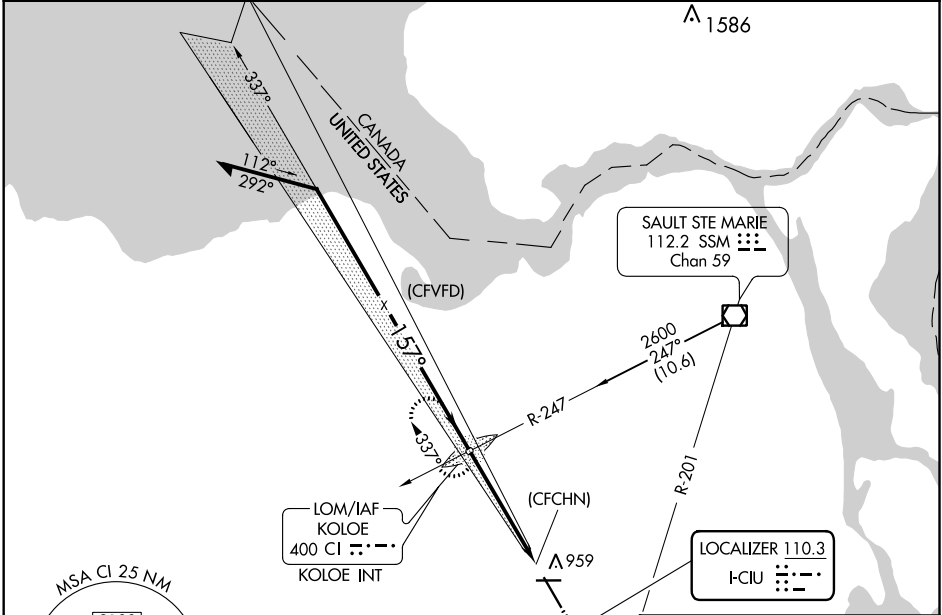
LOC I-CIU 110.3	APP CRS 157°	Rwy Idg 7203
		TDZE 799
		Apt Elev 799

ILS or LOC RWY 16

CHIPPEWA COUNTY INTL (CIU)

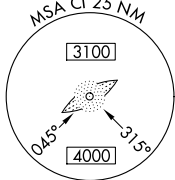
ADF required.	MALS R	MISSED APPROACH: Climb to 1500 then climbing right turn to 2600 direct KOLOE LOM/INT and hold. (TACAN aircraft climb to 5000 on heading 160° and SSM VOR/DME R-201 to PINES/SSM 24 DME and hold south, right turn, 021° inbound.)
▼ ▲NA Autopilot coupled approach NA below 1380.	▲5	

AWOS-3PT 127.575	TORONTO CENTER 132.65 344.5	UNICOM 123.0 (CTAF) 0
----------------------------	---------------------------------------	---------------------------------

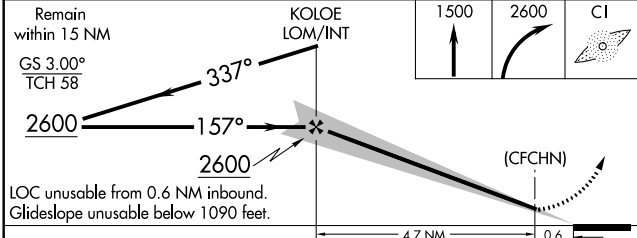


EC-1, 08 SEP 2022 to 06 OCT 2022

EC-1, 08 SEP 2022 to 06 OCT 2022



ELEV 799	TDZE 799
157° 5.3 NM from FAF	
5001 X 75	28
856	
7203 X 50	
34	
897	



Remain within 15 NM	GS 3.00°	TCH 58			
2600	157°	2600			
LOC unusable from 0.6 NM inbound.		Glideslope unusable below 1090 feet.			
CATEGORY	A	B	C	D	E
S-ILS 16	1090-1/2 291 (300-1/2)				
S-LOC 16	1160-1/2	361 (400-1/2)	1160-5/8	361 (400-5/8)	
▲ CIRCLING	1260-1	461 (500-1)	1260-1 1/2	1360-2	1380-2
			461 (500-1 1/2)	561 (600-2)	581 (600-2)

REIL Rwy 10, 28 and 34	
MRL Rwy 10-28	
HIRL Rwy 16-34	
FAF to MAP 4.7 NM	
Knots	60 90 120 150 180
Min:Sec	4:42 3:08 2:21 1:53 1:34