

MARYSVILLE, CALIFORNIA

ILS or LOC Y RWY 33

LOC I-MIZ 109.5	APCH CRS 325°	Rwy ldg TDZE Arprt Elev	12,001 105 113
---------------------------	-------------------------	----------------------------	---

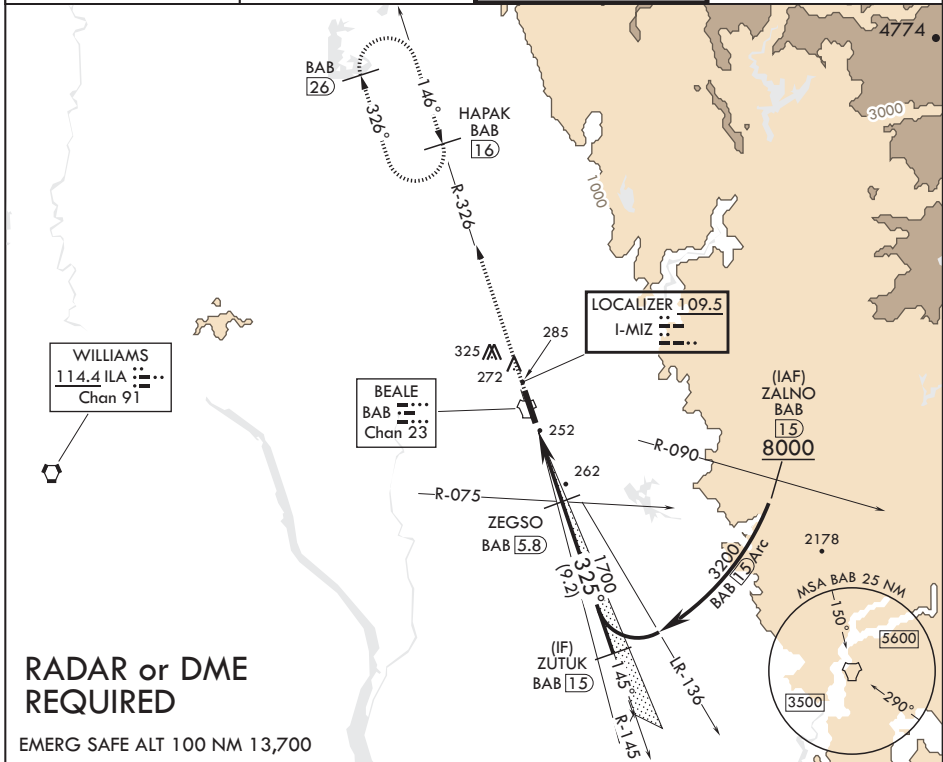
AL-771 (USAF)

BEALE AFB (KBAB)

⚠ * When ALS inop, increase RVR to 40 and vis to 3/4 mile.
 ** When ALS inop, increase CAT AB RVR to 55 and vis to 1 mile, CAT CDE RVR to 60 and vis to 1 1/8 miles.
 *** Circling not authorized E of Rwy 15-33.

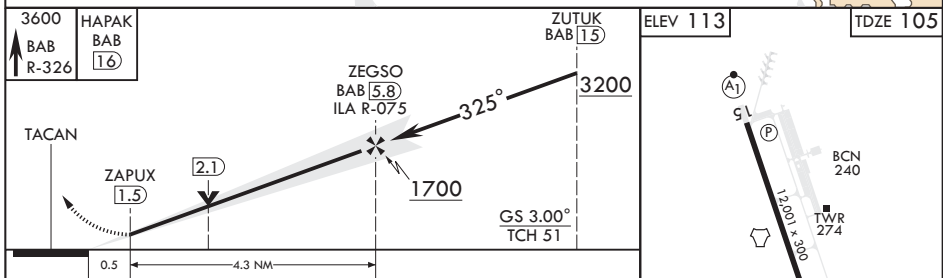
ALSF-1 MISSED APPROACH: Climb to 3600 intercept BAB TACAN R-326 to HAPAK and hold.

ATIS* 124.55 273.5	NORCAL APP CON 125.4 259.1	TOWER* 119.4 284.75	GND CON 121.6 257.75
------------------------------	--------------------------------------	-------------------------------	--------------------------------

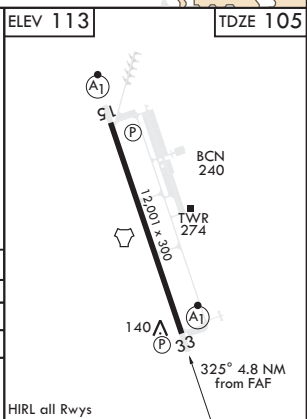


RADAR or DME REQUIRED

EMERG SAFE ALT 100 NM 13,700



CATEGORY	A	B	C	D	E
S-ILS 33*	305/24		200	(200-1/2)	
S-LOC 33**	520/24	415 (500-1/2)	520/40	415	(500-3/4)
C CIRCLING***	600-1	487 (500-1)	600-1 1/2 487 (500-1 1/2)	680-2 567 (600-2)	840-2 1/2 727 (800-2 1/2)



MARYSVILLE, CALIFORNIA

39°08'N - 121°26'W

BEALE AFB (KBAB)

Amdt 5 20JUL17

ILS or LOC Y RWY 33

SW-2, 08 SEP 2022 to 06 OCT 2022

SW-2, 08 SEP 2022 to 06 OCT 2022