

VOR RAL <b>108.6</b>	APP CRS <b>270°</b>	Rwy Idg TDZE Apt Elev	<b>N/A</b> <b>N/A</b> <b>819</b>
-------------------------	------------------------	-----------------------------	--

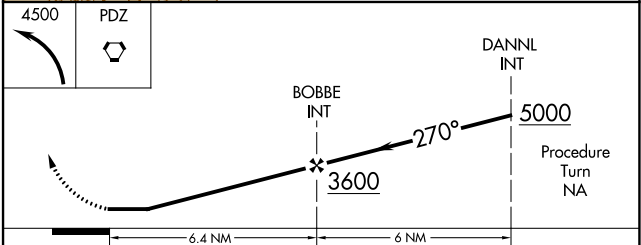
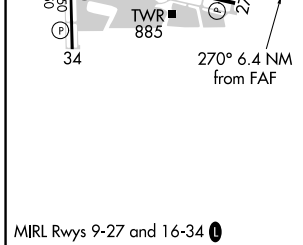
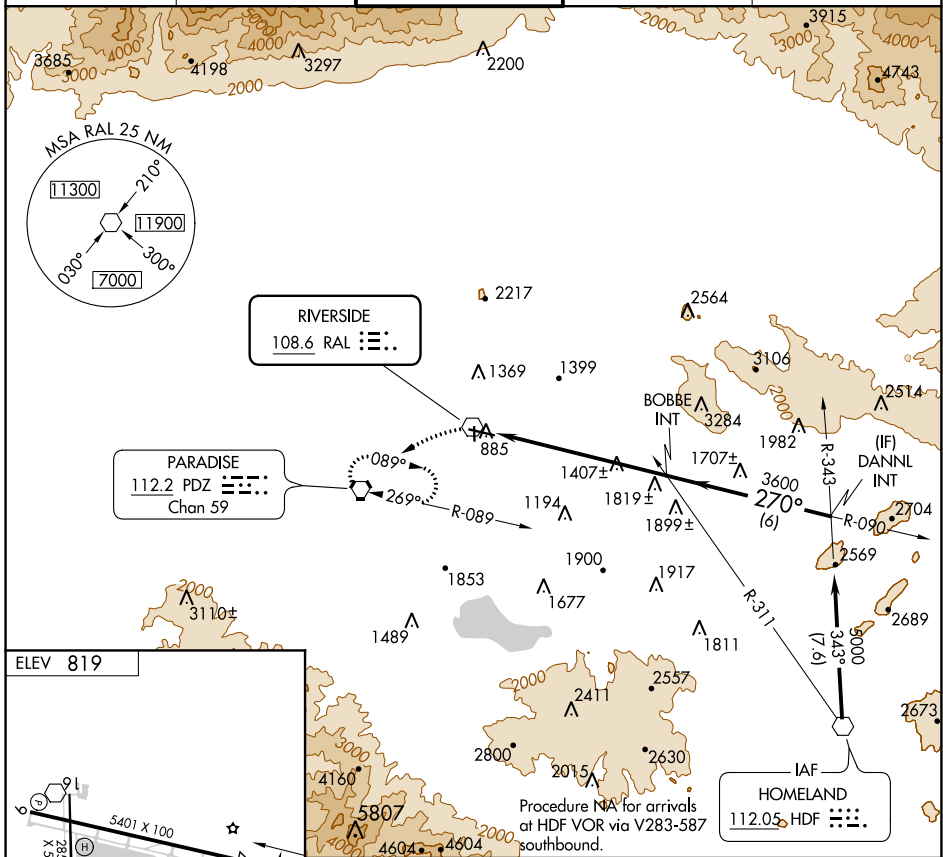
# VOR-A

RIVERSIDE MUNI (RAL)

**⚠** When local altimeter setting not received, use Chino altimeter setting and increase all MDAs 60 feet.

**⚠** MISSED APPROACH: Climbing left turn to 4500 direct PDZ VORTAC and hold, continue climb-in-hold to 4500.

ATIS <b>128.8</b>	SOCAL APP CON <b>135.4 377.125</b>	<b>RIVERSIDE TOWER ★</b> <b>121.0</b> (CTAF) <b>257.8</b>	GND CON <b>121.7</b>	UNICOM <b>122.95</b>
----------------------	---------------------------------------	--	-------------------------	-------------------------



FAF to MAP 6.4 NM		CATEGORY	A	B	C	D
Knots	60 90 120 150 180	CIRCLING	2300-1¼ 1481 (1500-1¼)	2300-1½ 1481 (1500-1½)	2300-3 1481 (1500-3)	NA
Min:Sec	6:24 4:16 3:12 2:34 2:08					

SW-3, 08 SEP 2022 to 06 OCT 2022

SW-3, 08 SEP 2022 to 06 OCT 2022