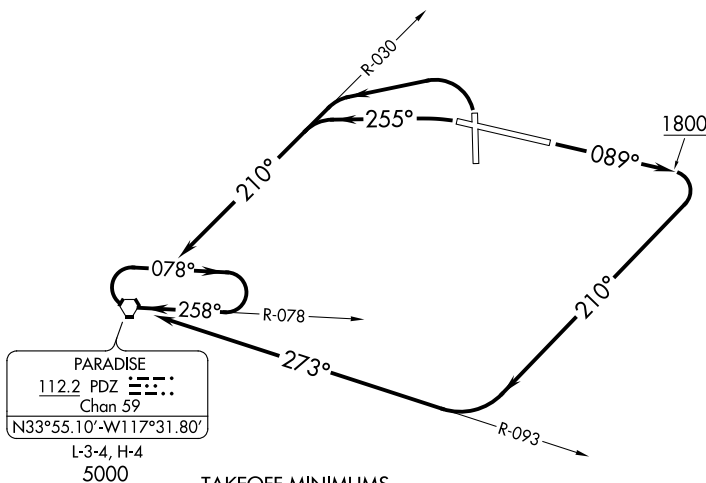


ATIS  
128.8  
GND CON  
121.7  
RIVERSIDE TOWER\*  
121.0 257.8  
SOCAL DEP CON  
135.4 377.125

TAKEOFF OBSTACLE NOTES

- Rwy 9: Terrain 4' from DER, 497' left of centerline, 836' MSL.  
Fence, vegetation, terrain beginning 77' from DER, 496' left of centerline, up to 843' MSL.  
Tree 604' from DER, 590' right of centerline, 856' MSL.  
Trees beginning 989' from DER, 594' right of centerline, up to 867' MSL.
- Rwy 27: Tree 600' from DER, 548' right of centerline, 786' MSL.  
Pole 609' from DER, 484' left of centerline, 40' AGL/783' MSL.  
Pole 758' from DER, 680' right of centerline, 41' AGL/790' MSL.  
Tree 1073' from DER, 650' left of centerline, 803' MSL.
- Rwy 34: Building 29' from DER, 306' right of centerline, 13' AGL/800' MSL.  
Poles, trees, buildings beginning 62' from DER, 200' right of centerline, up to 811' MSL.  
Building 62' from DER, 350' left of centerline, 35' AGL/796' MSL.  
Pole 300' from DER, 287' left of centerline, 38' AGL/799' MSL.  
Tree 543' from DER, 291' left of centerline, 814' MSL.  
Tree, building beginning 829' from DER, 420' right of centerline, up to 854' MSL.  
Building 1214' from DER, 376' left of centerline, 70' AGL/832' MSL.  
Transmission line, pole beginning 1914' from DER, 134' left of centerline, up to 66' AGL/834' MSL.  
Building 1.7 NM from DER, 1237' right of centerline, 23' AGL/1369' MSL.



TAKEOFF MINIMUMS

- Rwy 16: NA-terrain.
- Rwy 9: Standard with minimum climb of 310' per NM to 2300.
- Rwy 27: Standard with minimum climb of 470' per NM to 3000.
- Rwy 34: Standard with minimum climb of 440' per NM to 2700.

NOTE: Chart not to scale.

DEPARTURE ROUTE DESCRIPTION

TAKEOFF RUNWAY 9: Climb on heading 089° to 1800 then climbing right turn heading 210° to intercept PDZ VORTAC R-093 to PDZ VORTAC, thence. . . .

TAKEOFF RUNWAY 27: Climb on heading 255° to intercept PDZ R-030 to PDZ VORTAC thence. . . .

TAKEOFF RUNWAY 34: Climbing left turn to intercept PDZ VORTAC R-030 to PDZ VORTAC, thence. . . .

. . . . continue climb in PDZ holding pattern to cross PDZ VORTAC at or above 5000 or higher MEA for route of flight before proceeding on course.

SW-3, 08 SEP 2022 to 06 OCT 2022

SW-3, 08 SEP 2022 to 06 OCT 2022