

# JOE POOL FIVE DEPARTURE

## TAKEOFF MINIMUMS

Rwy 34: Standard.

Rwy 16: 400-2½ or standard with minimum climb of 325' per NM to 1100.

ATIS  
133.4  
CLNC DEL  
119.55  
GND CON  
121.6  
ADDISON TOWER \*  
126.0 (CTAF) 239.0  
REGIONAL DEP CON  
124.3 282.275

**MAVERICK**  
113.1 TTT  
Chan 78  
N32°52.15'  
W97°02.43'

**WACO**  
115.3 ACT  
Chan 100  
N31°39.73'  
W97°16.14'  
L-19, H-6

**HOARY**  
N30°34.63'  
W97°46.52'  
L-19-21, H-7

**CENTEX**  
112.8 CWK  
Chan 75

**SAN ANTONIO**  
116.8 SAT  
Chan 115  
N29°38.64'-W98°27.68'  
L-19, H-7

**COLLEGE STATION**  
113.3 CLL  
Chan 80  
N30°36.30'  
W96°25.24'  
L-19-21, H-7

**WINDU**  
N31°31.83'  
W97°04.95'  
L-19, H-6

**NELYN**  
N32°17.10'  
W97°11.15'

**JASPA**  
N32°17.10'  
W97°03.54'  
L-17

**ARDIA**  
N32°17.10'  
W96°56.27'  
L-17

**ELLVR**  
N31°42.49'  
W96°50.27'  
L-19, H-6

**DARTZ**  
N32°17.15'  
W96°48.66'

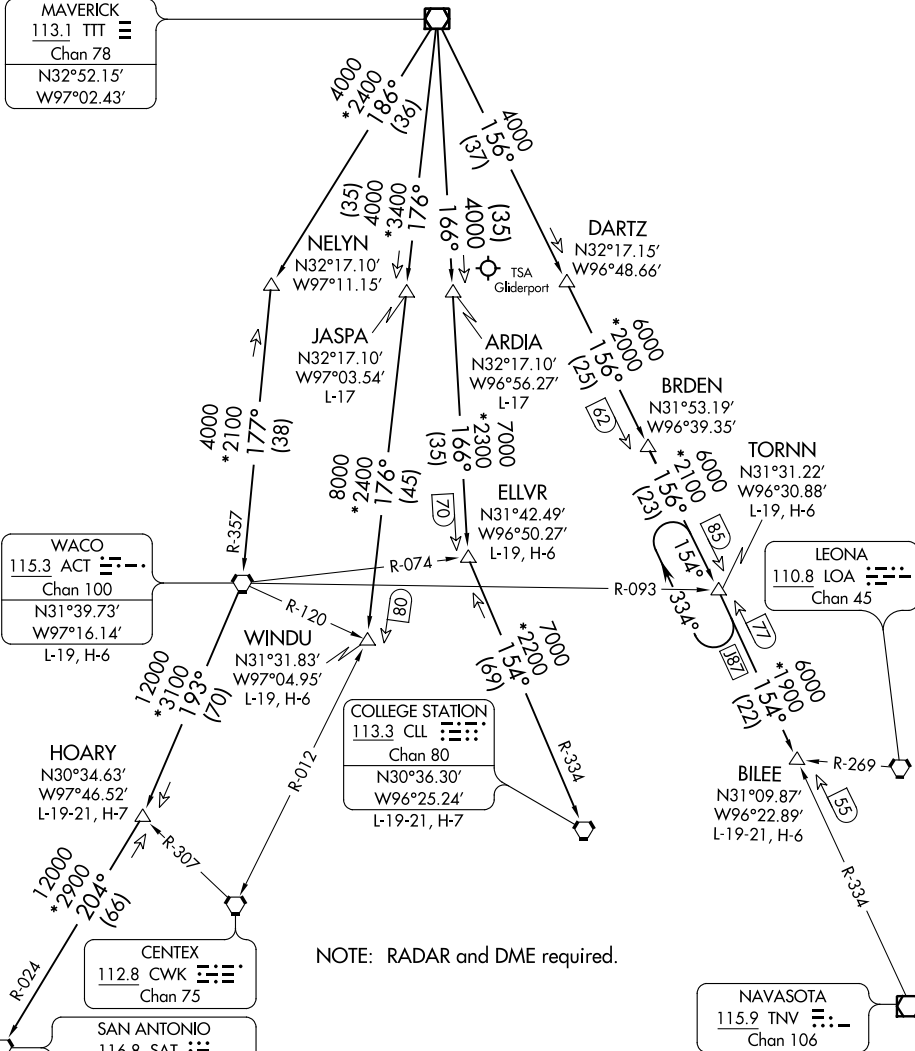
**BRDEN**  
N31°53.19'  
W96°39.35'  
L-17

**TORNN**  
N31°31.22'  
W96°30.88'  
L-19, H-6

**LEONA**  
110.8 LOA  
Chan 45

**BILEE**  
N31°09.87'  
W96°22.89'  
L-19-21, H-6

**NAVASOTA**  
115.9 TNV  
Chan 106



NOTE: RADAR and DME required.

(NARRATIVE ON FOLLOWING PAGE)  
(NOTES CONTINUED ON FOLLOWING PAGE)

NOTE: Chart not to scale.

# JOE POOL FIVE DEPARTURE

SC-2, 08 SEP 2022 to 06 OCT 2022

SC-2, 08 SEP 2022 to 06 OCT 2022