

APP CRS 306°	Rwy Idg 7959
	TDZE 591
	Apt Elev 597

RNAV (RNP) Z RWY 30

GARY/CHICAGO INTL (GYY)

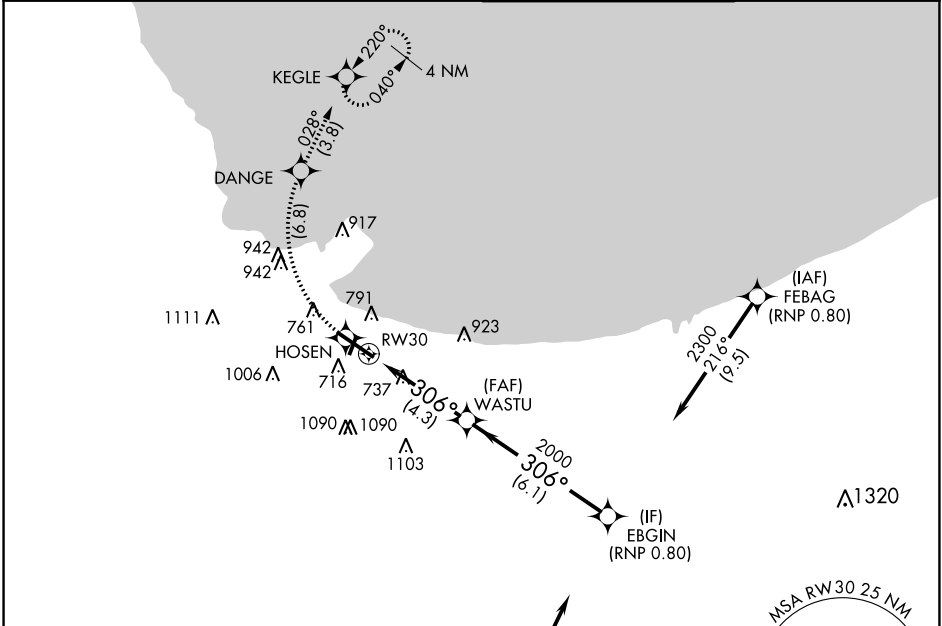
RNP AR APCH - GPS.

▼ For uncompensated Baro-VNAV systems, procedure NA below -16°C or above 54°C. Missed approach requires RNP less than 1.0. For inop ALS, increase RNP 0.30 all Cats visibility to 1½ SM.

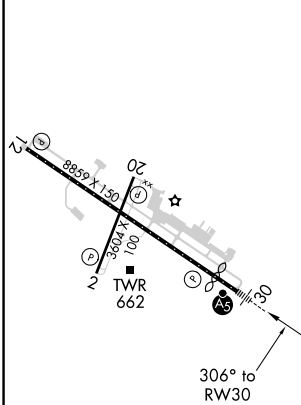


MISSED APPROACH: Climb to 2100 on track 306° to HOSEN, right turn to DANGE, then track 028° to KEGLE and hold.

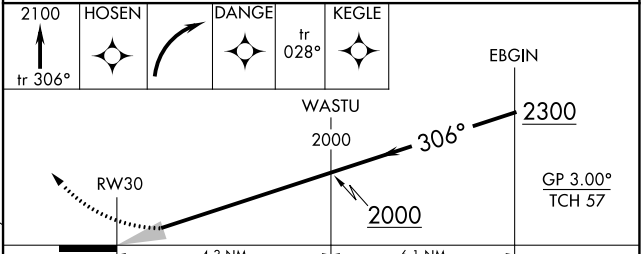
ATIS 134.575	CHICAGO APP CON 133.1 285.6	GARY TOWER ★ 125.6 (CTAF) 0	GND CON 121.9
------------------------	---------------------------------------	---------------------------------------	-------------------------



ELEV 597	D	TDZE 591
----------	----------	----------



REIL Rws 1, 2 and 20 **0**
 HIRL Rwy 12-30 **0**
 MIRL Rwy 2-20 **0**



CATEGORY	A	B	C	D
RNP 0.13 DA	976/35		385 (400-½)	
RNP 0.30 DA	1098/55		507 (600-1)	

AUTHORIZATION REQUIRED

EC-2, 08 SEP 2022 to 06 OCT 2022

EC-2, 08 SEP 2022 to 06 OCT 2022