

**TOP ALTITUDE:
ASSIGNED BY ATC**

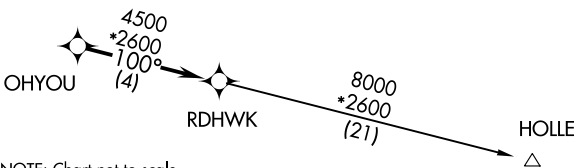
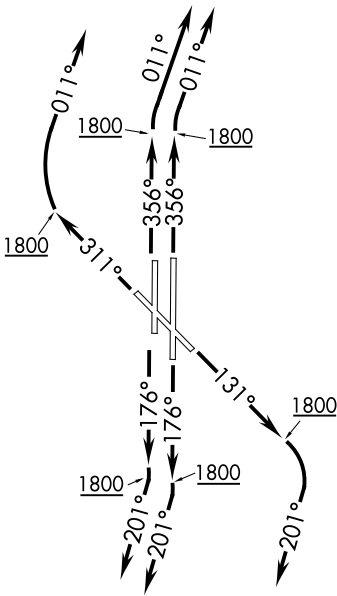
ATIS
128.725
GND CON
121.7
WILEY POST TOWER ★
126.9 306.9
OKE CITY DEP CON
124.6 266.8 (South)
124.2 336.4 (North)

NOTE: RADAR required.
NOTE: DME/DME/IRU or
GPS required.
NOTE: RNAV 1.

TAKEOFF MINIMUMS:

Rwy 13, 17L/R, 31, 35L/R:

Standard with minimum climb of 500' per NM to 2100.



NOTE: Chart not to scale.

DEPARTURE ROUTE DESCRIPTION

- TAKEOFF RWY 13: Climb heading 131° to 1800, then right turn heading 201° or as assigned by ATC, expect RADAR vectors to OHYOU, thence
- TAKEOFF RWYS 17L/R: Climb on heading 176° to 1800, then right turn heading 201° or as assigned by ATC, expect RADAR vectors to OHYOU, thence
- TAKEOFF RWY 31: Climb on heading 311° to 1800, then right turn heading 011° or as assigned by ATC, expect RADAR vectors to OHYOU, thence
- TAKEOFF RWY 35L: Climb on heading 356° to 1800, then heading 011° or as assigned by ATC, expect RADAR vectors to OHYOU, thence
- TAKEOFF RWY 35R: Climb on heading 356° to 1800, then right turn heading 011° or as assigned by ATC, expect RADAR vectors to OHYOU, thence

. . . . on track 100° to RDHWK, then on (transition). Maintain 3000 or as assigned by ATC. Expect filed altitude 10 minutes after departure.

HOLLE TRANSITION (RDHWK3.HOLLE):

SC-1, 08 SEP 2022 to 06 OCT 2022

SC-1, 08 SEP 2022 to 06 OCT 2022