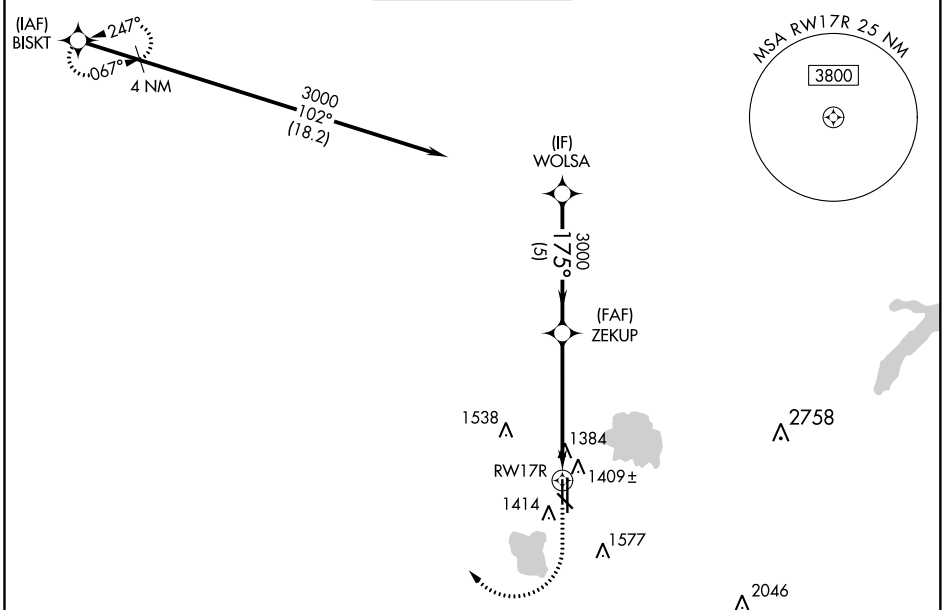


RNAV (GPS) RWY 17R

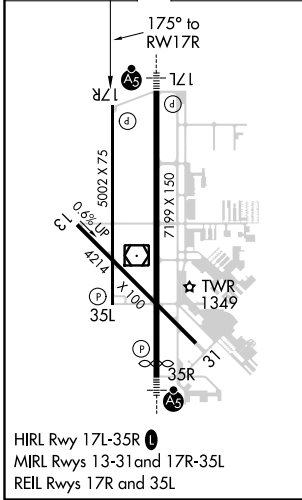
WILEY POST (PWA)

APP CRS	Rwy Idg	5002
175°	TDZE	1283
	Apt Elev	1300

RNP APCH-GPS.		MISSED APPROACH: Climb to 1700 then climbing right turn to 3400 direct BISKT and hold.		
ATIS	OKE CITY APP CON	WILEY POST TOWER ★	GND CON	UNICOM
128.725	124.6 266.8	126.9 (CTAF) 306.9	121.7	122.95



ELEV	1300	D	TDZE	1283
------	------	----------	------	------



1700	3400	BISKT		
		ZEKUP	WOLSA	
		3000	3000	
1.1 NM		4.2 NM	5 NM	
CATEGORY	A	B	C	D
INAV MDA	1660-1		377 (400-1)	
C CIRCLING	1780-1	480 (500-1)	1880-1½ 580 (600-1½)	1880-2 580 (600-2)

SC-1, 08 SEP 2022 to 06 OCT 2022

SC-1, 08 SEP 2022 to 06 OCT 2022