

OLGUY THREE DEPARTURE (RNAV)

SC-1, 08 SEP 2022 to 06 OCT 2022

ATIS 128.725
 GND CON 121.7
 WILEY POST TOWER *
 126.9 306.9
 OKE CITY DEP CON 124.6 266.8

TAKEOFF MINIMUMS:

Rwys 13, 17L/R, 31, 35L/R:

Standard with minimum climb of 500' per NM to 2100.



DEPARTURE ROUTE DESCRIPTION

TAKEOFF RWY 13: Climb heading 131° to 1800, then right turn heading 201° or as assigned by ATC, expect RADAR vectors to BEEDI, thence

TAKEOFF RWYS 17L/R: Climb on heading 176° to 1800, then right turn heading 201° or as assigned by ATC, expect RADAR vectors to BEEDI, thence

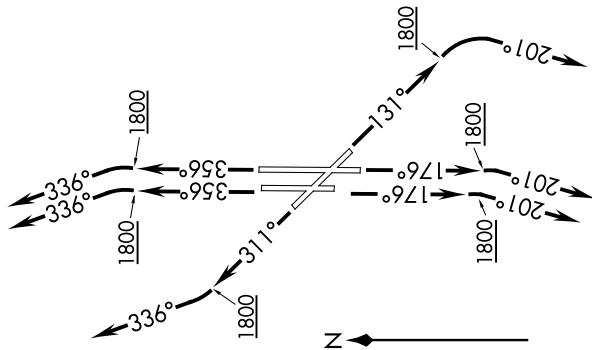
TAKEOFF RWY 31: Climb on heading 311° to 1800, then right turn heading 336° or as assigned by ATC, expect RADAR vectors to BEEDI, thence

TAKEOFF RWYS 35L/R: Climb on heading 356° to 1800, then left turn heading 336° or as assigned by ATC, expect RADAR vectors to BEEDI, thence

. . . . on track 267° to OLGUY then on (transition). Maintain 3000 or as assigned by ATC. Expect filed altitude 10 minutes after departure.

GRUVN TRANSITION (OLGUY3.GRUVN):
YOUSE TRANSITION (OLGUY3.YOUSE):

TOP ALTITUDE: Assigned by ATC



NOTE: RADAR required.
 NOTE: DME/DME/IRU or GPS required.
 NOTE: RNAV 1.

NOTE: Chart not to scale.

SC-1, 08 SEP 2022 to 06 OCT 2022