

LOM OS <b>395</b>	APP CRS <b>003°</b>	Rwy Idg <b>8002</b>
		TDZE <b>808</b>
		Apt Elev <b>808</b>

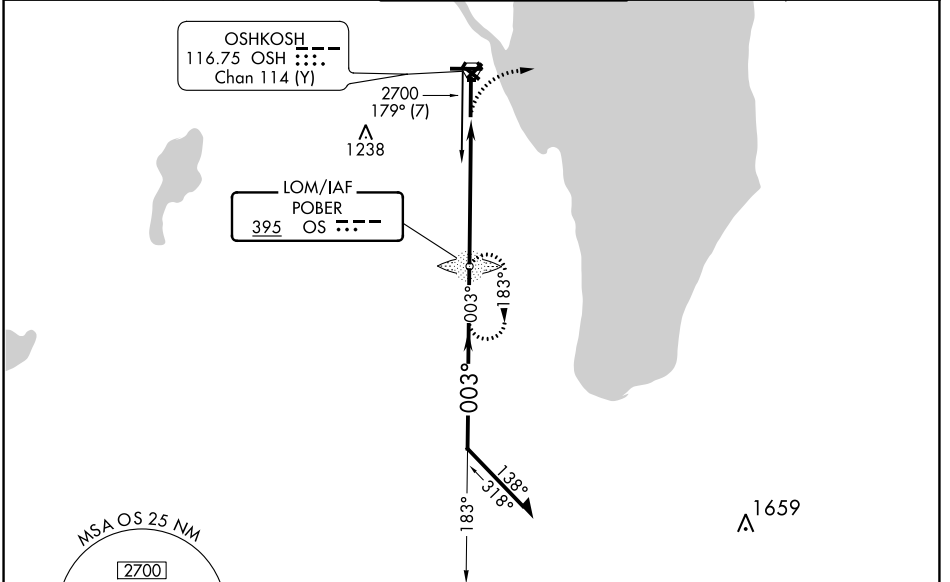
# NDB RWY 36

WITTMAN RGNL (OSH)

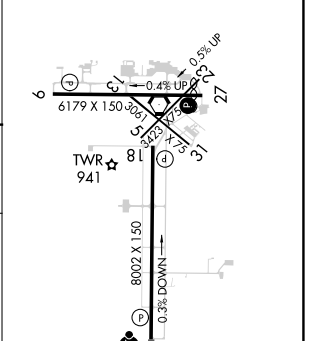
**NA** When local altimeter setting not received, use Fond Du Lac altimeter setting and increase all MDA 40 feet; increase S-36 Cat C/D and Circling Cat C visibilities 1/8 mile, increase Circling Cat D visibility 1/4 mile. For inop MALSRS, increase S-36 Cat D visibility to 1 1/8 mile. For inop MALSRS when using Fond Du Lac altimeter setting, increase S-36 Cat D visibility to 2 miles. Circling to Rwy 5, 23, and 31 NA at night.

**MALSRS**  
MISSED APPROACH: Climbing right turn to 3000 on heading 090° then right turn direct POBER LOM and hold.

ATIS <b>125.9</b>	MILWAUKEE APP CON <b>127.0 263.075</b>	OSHKOSH TOWER ★ <b>118.5 (CTAF) 290.9</b>	GND CON <b>132.3</b>	UNICOM <b>122.95</b>
----------------------	---	--	-------------------------	-------------------------



ELEV 808	<b>D</b>	TDZE 808
----------	----------	----------



Remain within 10 NM

OS LOM

3000 hdg 090° OS

2700 003° 2700

VGSI and descent angles not coincident (VGSI Angle 3.00/TCH 52)

3.21° TCH 52

5.4 NM

REIL Rwys 18 and 27	HIRL Rwys 9-27 and 18-36	FAF to MAP 5.4 NM
		Knots 60 90 120 150 180
		Min:Sec 5:24 3:36 2:42 2:10 1:48

CATEGORY	A	B	C	D
S-36	1460/40 652 (700-3/4)	1460-1 3/8 652 (700-1 1/8)	1460-1 3/8 652 (700-1 1/8)	1460-2 652 (700-2)
<b>C</b> CIRCLING	1460-1 652 (700-1)	1460-1 652 (700-1)	1460-1 652 (700-1 1/8)	1460-2 652 (700-2)

EC-3, 08 SEP 2022 to 06 OCT 2022

EC-3, 08 SEP 2022 to 06 OCT 2022