

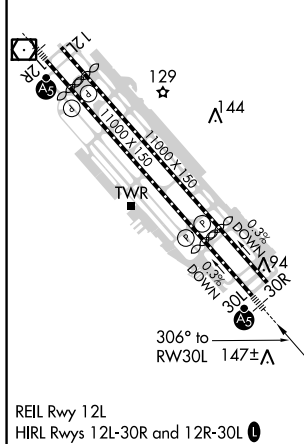
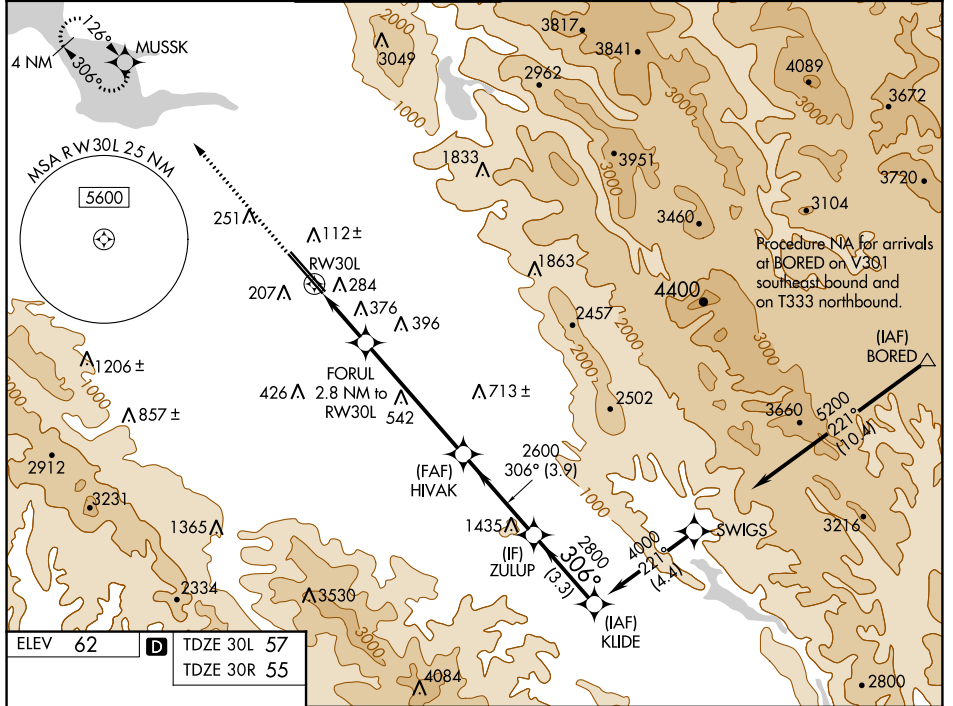
WAAS CH 97306 W30A	APP CRS 306°	Rwy Idg 7614	30R 7597
		TDZE 57	55
		Apt Elev 62	62

RNAV (GPS) Y RWY 30L

NORMAN Y MINETA SAN JOSE INTL (SJC)

RNP APCH-GPS. ▼ For uncompensated Baro-VNAV systems, LNAV/VNAV NA below 1°C or above 54°C. For inop ALS, increase LNAV/VNAV all Cats visibility to 1½ SM. *RVR 1800 authorized with use of FD or AP or HUD to DA.	MALSR Rwy 30L 	MISSED APPROACH: Climb to 2300 direct MUSSK and hold.
--	----------------------	---

D-ATIS 126.95	NORCAL APP CON 120.1 290.25	SAN JOSE TOWER * 124.0 (CTAF) 0 257.6	GND CON 121.7	CLNC DEL 118.0	CPDLC	UNICOM 122.95
-------------------------	---------------------------------------	---	-------------------------	--------------------------	-------	-------------------------



2300	MUSSK	VGSi and RNAV glidepath not coincident (VGSi Angle 3.00°/TCH 70).		KLIDE
		FORUL 2.8 NM to RW30L	HIVAK 2600	ZULUP 2800
				KLIDE 4000
				GP 3.00° TCH 54
		1.6 NM	1.2 NM	5.3 NM
		1.6 NM	1.2 NM	5.3 NM
CATEGORY	A	B	C	D
LPV DA*	257/24 200 (200-½)			
LNAV/VNAV DA	540/50 483 (500-1)			
LNAV MDA	640/24	583 (600-½)	640-1¼	583 (600-1¼)
SIDESTEP 30R	640-1 585 (600-1)			

SW-2, 08 SEP 2022 to 06 OCT 2022

SW-2, 08 SEP 2022 to 06 OCT 2022