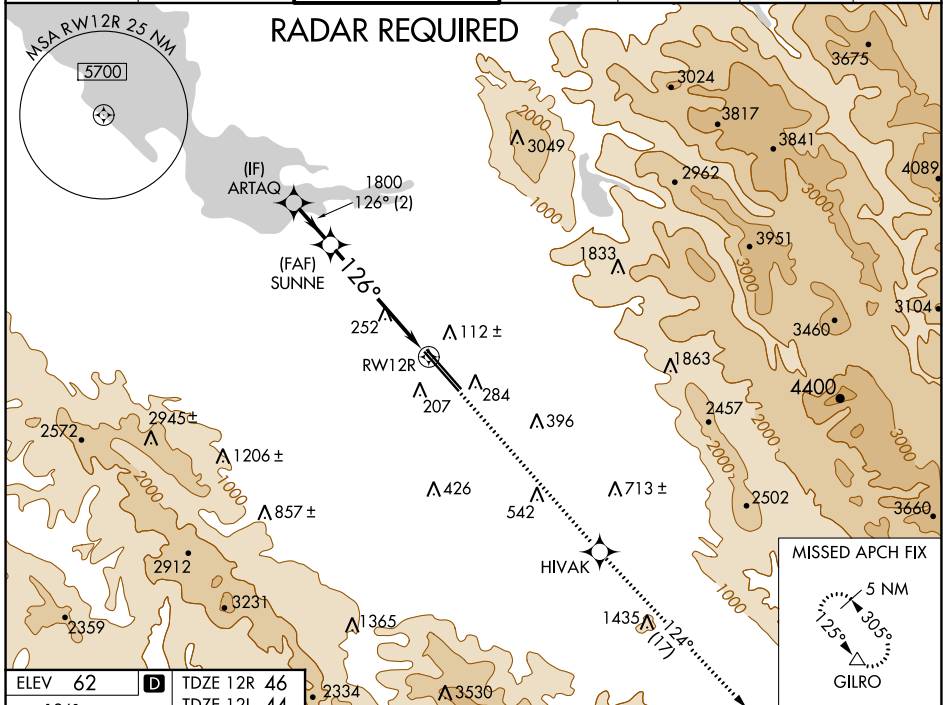


WAAS CH 90106 W12A	APP CRS 126°	Rwy Idg 8587 8831	12R 12L
		TDZE 46 44	
		Apt Elev 62 62	

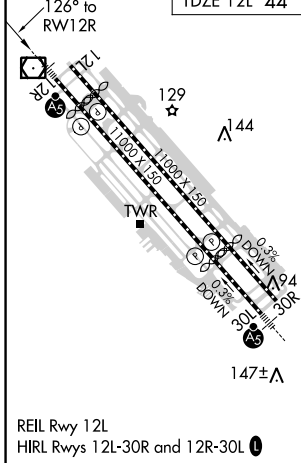
RNAV (GPS) Y RWY 12R

NORMAN Y MINETA SAN JOSE INTL (SJC)

<p>▼ For uncompensated Baro-VNAV systems, LNAV/VNAV NA below -1°C (31°F) or above 54°C (130°F). DME/DME RNP-0.3 NA. For inoperative MALS, increase LNAV/VNAV all Cats visibility to 1 mile and LNAV Cats C/D visibility to 1½ mile.</p>			<p>MALS Rwy 12R</p>	<p>MISSED APPROACH: Climb to 4600 direct HIWAK and on track 124° to GILRO and hold.</p>		
D-ATIS 126.95	NORCAL APP CON 120.1 290.25	SAN JOSE TOWER ★ 124.0 (CTAF) 257.6	GND CON 121.7	CLNC DEL 118.0	CPDLC	UNICOM 122.95



ELEV 62	TDZE 12R 46
	TDZE 12L 44



VGSI and RNAV glidepath not coincident (VGSI Angle 3.00/TCH 75).

4600	HIWAK	tr 124°	GILRO
*LNAV only			
1800	1800		
GP 3.00°	TCH 58		
	2 NM	4.1 NM	1.3 NM
CATEGORY	A	B	C
LPV DA	246-½		200 (200-½)
LNAV/VNAV DA	371-5/8 325 (400-5/8)		371-1 325 (400-1)
LNAV MDA	520-½ 474 (500-½)		520-1 474 (500-1)
SIDESTEP 12L	520-1 476 (500-1)		520-1½ 476 (500-1½) 520-2 476 (500-2)

SW-2, 08 SEP 2022 to 06 OCT 2022

SW-2, 08 SEP 2022 to 06 OCT 2022