

WAAS CH 69501 W12B	APP CRS 126°	Rwy Idg TDZE Apt Elev	8831 44 62
--	------------------------	-----------------------------	---------------------------------------

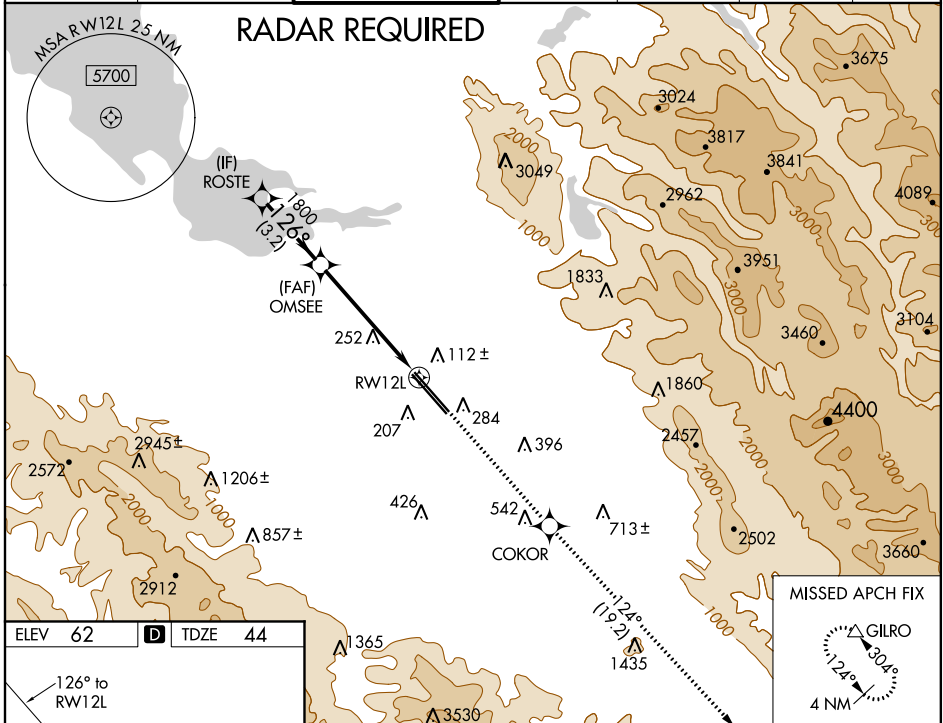
RNAV (GPS) Y RWY 12L

NORMAN Y MINETA SAN JOSE INTL (SJC)

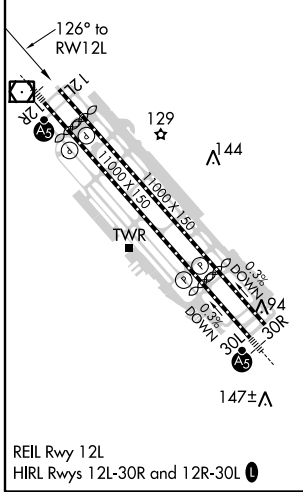
For uncompensated Baro-VNAV systems, LNAV/VNAV NA below -1°C (31°F) or above 54°C (130°F).
DME/DME RNP- 0.3 NA.

MISSED APPROACH: Climb to 4600 direct COKOR and on track 124° to GILRO and hold.

D-ATIS 126.95	NORCAL APP CON 120.1 290.25	SAN JOSE TOWER ★ 124.0 (CTAF) 0 257.6	GND CON 121.7	CLNC DEL 118.0	CPDLC	UNICOM 122.95
-------------------------	---------------------------------------	---	-------------------------	--------------------------	-------	-------------------------



ELEV 62	D	TDZE 44
---------	----------	---------



VGSI and RNAV glidepath not coincident (VGSI Angle 3.00/TCH 70).

ROSTE	OMSEE	4600	COKOR	GILRO
		↑	✦	△
			tr 124°	
*LNAV only				
2300	1800	1800		
	126°			
	1800			
		*1.3 NM to RWY 12L		
			RWY 12L	
GP 3.00°				
TCH 57				
	3.2 NM	4.1 NM	1.3 NM	
CATEGORY	A	B	C	D
LPV	DA	294-3/4	250 (300-3/4)	
LNAV/VNAV	DA	341-1	297 (300-1)	
LNAV MDA	520-1	476 (500-1)	520-1 3/8	476 (500-1 3/8)

SW-2, 08 SEP 2022 to 06 OCT 2022

SW-2, 08 SEP 2022 to 06 OCT 2022