

RNAV (RNP) Z RWY 30L

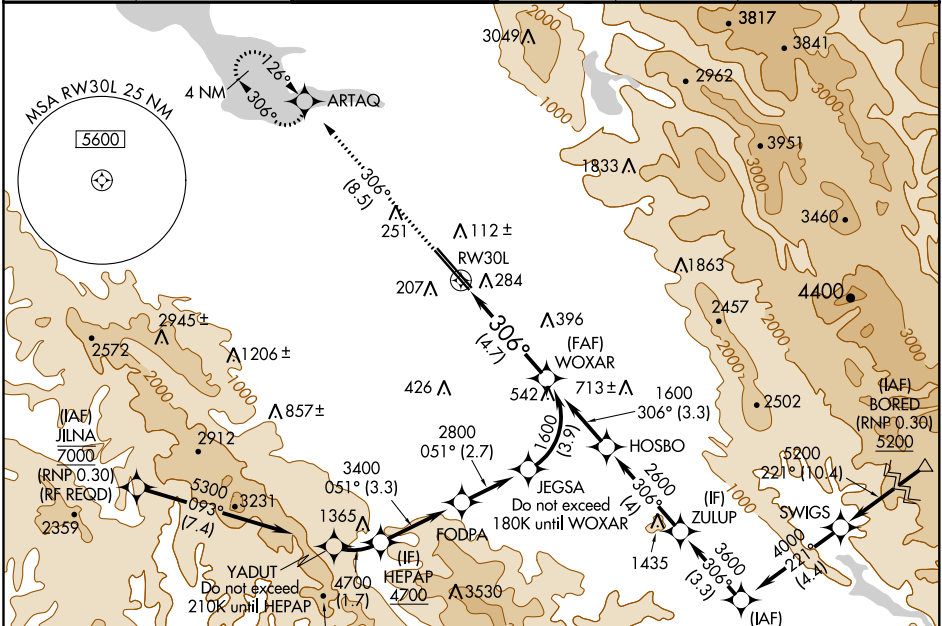
NORMAN Y MINETA SAN JOSE INTL (SJC)

APP CRS 306°	Rwy Idg TDZE Apt Elev	7614 57 62
------------------------	-----------------------------	---------------------------------------

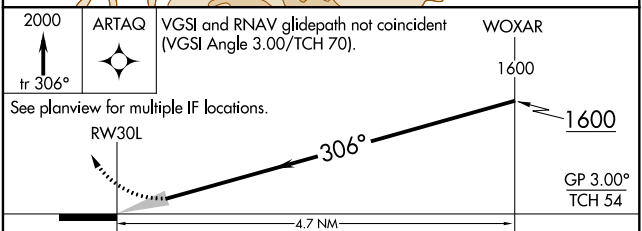
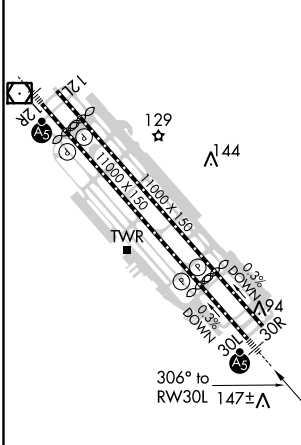
RNP AR APCH.
 ▼ For uncompensated Baro-VNAV systems, procedure NA below 1°C or above 54°C. For inop ALS, increase RNP 0.10 all Cats visibility to RVR 5500 and increase RNP 0.30 all Cats visibility to 1½ SM.

MALSR
 MISSED APPROACH: Climb to 2000 on track 306° to ARTAQ and hold.

D-ATIS 126.95	NORCAL APP CON 120.1 290.25	SAN JOSE TOWER ★ 124.0 (CTAF) 257.6	GND CON 121.7	CLNC DEL 118.0	CPDLC	UNICOM 122.95
-------------------------	---------------------------------------	---	-------------------------	--------------------------	-------	-------------------------



ELEV 62	D	TDZE 57
---------	---	---------



CATEGORY	A	B	C	D
RNP 0.10 DA		430/35	373 (400-¾)	
RNP 0.20 DA		464/40	407 (500-¾)	
RNP 0.30 DA		541/50	484 (500-1)	

AUTHORIZATION REQUIRED

SW-2, 08 SEP 2022 to 06 OCT 2022

SW-2, 08 SEP 2022 to 06 OCT 2022