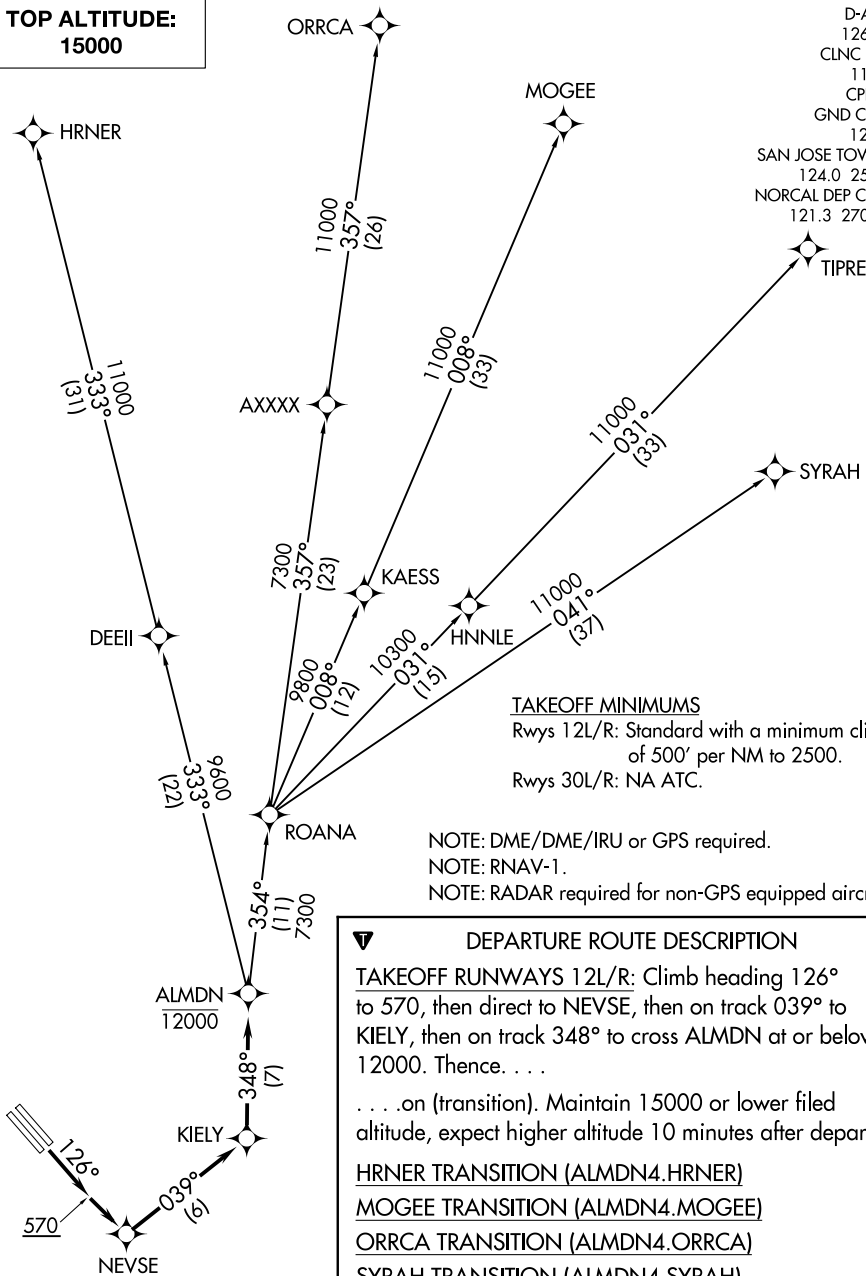


ALMDN FOUR DEPARTURE (RNAV)

**TOP ALTITUDE:
15000**

D-ATIS
126.95
CLNC DEL
118.0
CPDLC
GND CON
121.7
SAN JOSE TOWER *
124.0 257.6
NORCAL DEP CON
121.3 270.35



TAKEOFF MINIMUMS

Rwys 12L/R: Standard with a minimum climb of 500' per NM to 2500.
Rwys 30L/R: NA ATC.

NOTE: DME/DME/IRU or GPS required.
NOTE: RNAV-1.
NOTE: RADAR required for non-GPS equipped aircraft.

DEPARTURE ROUTE DESCRIPTION

TAKEOFF RUNWAYS 12L/R: Climb heading 126° to 570, then direct to NEVSE, then on track 039° to KIELY, then on track 348° to cross ALMDN at or below 12000. Thence. . . .on (transition). Maintain 15000 or lower filed altitude, expect higher altitude 10 minutes after departure.

- HRNER TRANSITION (ALMDN4.HRNER)
- MOGEE TRANSITION (ALMDN4.MOGEE)
- ORRCA TRANSITION (ALMDN4.ORRCA)
- SYRAH TRANSITION (ALMDN4.SYRAH)
- TIPRE TRANSITION (ALMDN4.TIPRE)

NOTE: Chart not to scale.

ALMDN FOUR DEPARTURE (RNAV)

SW-2, 08 SEP 2022 to 06 OCT 2022

SW-2, 08 SEP 2022 to 06 OCT 2022