

WAAS CH <b>69211</b> <b>W14A</b>	APP CRS <b>143°</b>	Rwy Idg TDZE Apt Elev	<b>6399</b> <b>668</b> <b>668</b>
--	------------------------	-----------------------------	---

# RNAV (GPS) RWY 14

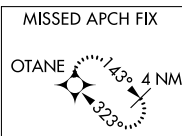
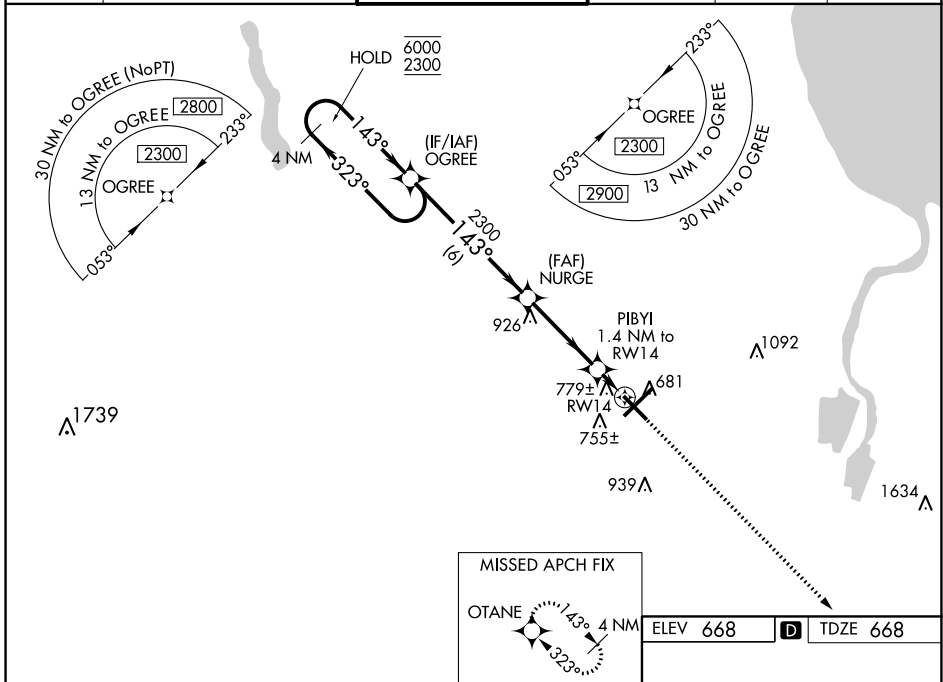
MBS INTL (MBS)

RNP APCH.

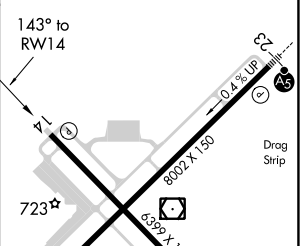
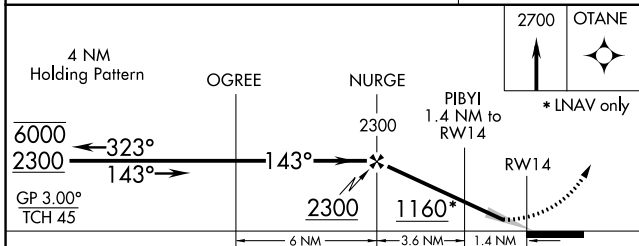
**▼** For uncompensated Baro-VNAV systems, LNAV/VNAV NA below -18°C or above 54°C.

MISSED APPROACH: Climb to 2700 direct OTANE and hold.

ATIS <b>125.925</b>	GREAT LAKES APP CON * <b>126.45 235.625</b>	SAGINAW TOWER * <b>120.1 (CTAF) 257.7</b>	GND CON <b>121.7</b>	CLNC DEL <b>121.85</b>	UNICOM <b>122.95</b>
------------------------	--	--	-------------------------	---------------------------	-------------------------



ELEV 668	<b>D</b>	TDZE 668
----------	----------	----------



CATEGORY	A	B	C	D
LPV DA		868-3/4	200 (200-3/4)	
LNAV/VNAV DA		960-7/8	292 (300-7/8)	
LNAV MDA		1040-1	372 (400-1)	
<b>C</b> CIRCLING	1080-1 412 (500-1)	1120-1 452 (500-1)	1240-1 1/2 572 (600-1 1/2)	1240-2 572 (600-2)

REIL Rwy 14 and 32 **①**  
HIRL Rwy 5-23 and 14-32 **②**

EC-1, 08 SEP 2022 to 06 OCT 2022

EC-1, 08 SEP 2022 to 06 OCT 2022