

RNAV (RNP) Z RWY 36R

AUSTIN-BERGSTROM INTL (AUS)

APP CRS	Rwy ldg	9000
355°	TDZE	480
	Apt Elev	542

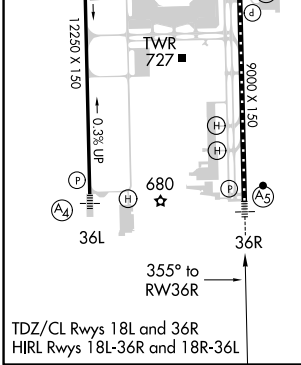
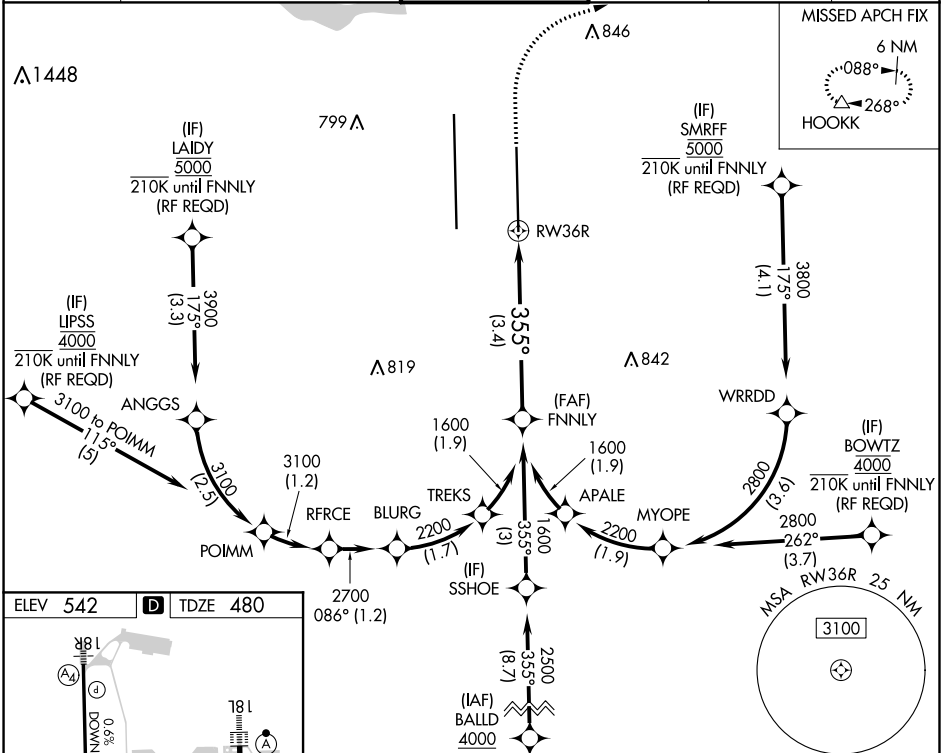
RNP AR APCH. RADAR required.

Simultaneous approach authorized. For uncompensated Baro-VNAV systems, procedure NA below -5°C or above 54°C. For inop ALS, increase RNP 0.11 all Cats visibility to RVR 4500, RNP 0.16 all Cats visibility to RVR 6000, and RNP 0.30 all Cats visibility to 1/4 SM.

MALSR

MISSED APPROACH: Climb to 1000 then climbing right turn to 3000 direct HOOKK and hold.

D-ATIS	AUSTIN APP CON	AUSTIN TOWER	GND CON	CLNC DEL	CPDLC
124.4	127.225 317.65 (EAST) 120.875 270.25 (SOUTH) 119.0 370.85 (WEST)	121.0 281.5	121.9 348.6	125.5 263.0	



1000 3000 HOOKK

VGSI and RNAV glidepath not coincident (VGSI Angle 3.00°/TCH 59°)

See planview for multiple IF locations.

GP 3.00° TCH 52

CATEGORY	A	B	C	D
RNP 0.11 DA		744/24	264 (300-1/2)	
RNP 0.16 DA		862/35	382 (400-3/8)	
RNP 0.30 DA		915/40	435 (400-3/4)	

AUTHORIZATION REQUIRED

SC-3, 08 SEP 2022 to 06 OCT 2022

SC-3, 08 SEP 2022 to 06 OCT 2022