

# CLOUD ONE ARRIVAL

AL-545 (FAA)

PALM SPRINGS, CALIFORNIA

### SOCAL APP CON \*

126.7 370.95  
135.275 251.1  
PSP ATIS  
124.65  
TRM ASOS  
118.325

### PALM SPRINGS TOWER \*

119.7 377.05  
BERMUDA DUNES UNICOM  
122.8  
JACQUELINE COCHRAN UNICOM  
123.0

**GOFFS**  
114.4 GFS  
Chan 91  
N35°07.87'-W115°10.59'  
L-7, H-4

**NEEDLES**  
115.2 EED  
Chan 99  
N34°45.96'-W114°28.45'  
L-7, H-4

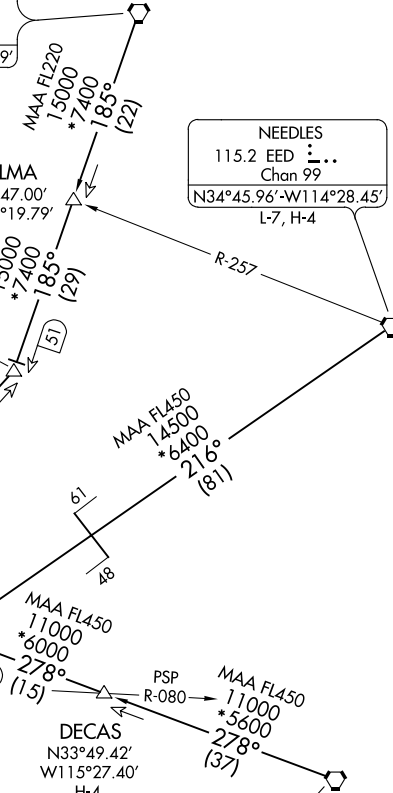
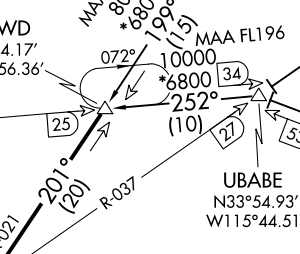
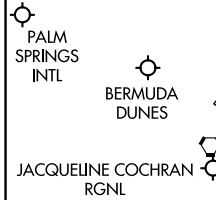
**TWENTYNINE PALMS**  
114.2 TNP  
Chan 89  
N34°06.73'-W115°46.19'

**PALM SPRINGS**  
115.5 PSP  
Chan 102

**CLOUD**  
N33°54.17'  
W115°56.36'

**THERMAL**  
116.2 TRM  
Chan 109  
N33°37.69'-W116°09.61'

**BLYTHE**  
117.4 BLH  
Chan 121  
N33°35.76'-W114°45.67'  
L-4-5, H-4



NOTE: Chart not to scale.

NOTE: DME required.

## ARRIVAL ROUTE DESCRIPTION

**BLYTHE TRANSITION (BLH.CLOUD1):** From over BLH VORTAC on BLH R-278 and PSP R-072 to CLOUD DME. Thence. . .

**DECAS TRANSITION (DECAS.CLOUD1):** From over DECAS INT on BLH R-278 and PSP R-072 to CLOUD DME. Thence. . .

**GOFFS TRANSITION (GFS.CLOUD1):** From over GFS VORTAC on GFS R-185 and TNP R-028 to TNP VORTAC, then on TNP R-199 to CLOUD DME. Thence. . .

**NEEDLES TRANSITION (EED.CLOUD1):** From over EED VORTAC on EED R-216 and TRM R-037 to UBABE DME, then on PSP R-072 to CLOUD DME. Thence. . .

. . . From over CLOUD DME on TRM R-021 to TRM VORTAC. Expect RADAR vectors to final approach course.

# CLOUD ONE ARRIVAL

(CLOUD.CLOUD1) 12MAY05

PALM SPRINGS, CALIFORNIA

SW-3, 08 SEP 2022 to 06 OCT 2022

SW-3, 08 SEP 2022 to 06 OCT 2022