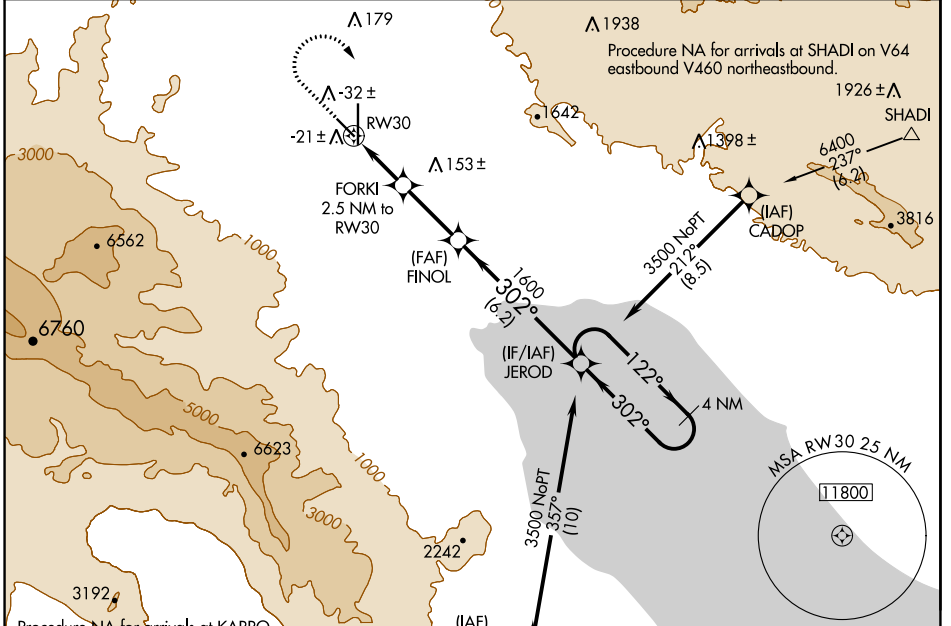


WAAS CH 77941 W30A	APP CRS 302°	Rwy Idg TDZE Apt Elev	4995 -121 -115
--	------------------------	-----------------------------	---

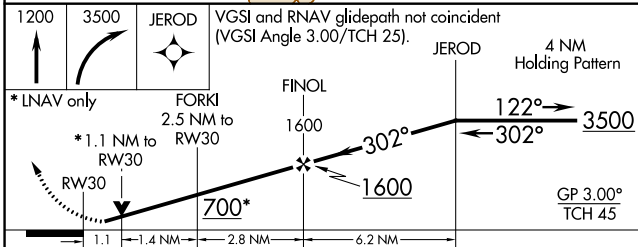
RNAV (GPS) RWY 30

JACQUELINE COCHRAN RGNL (TRM)

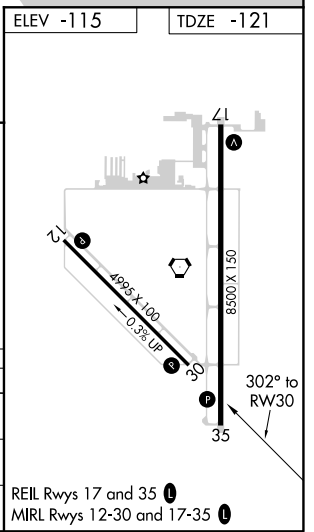
RNP APCH. ▼ ▲ Rwy 30 helicopter visibility reduction below 3/4 SM NA.		MISSED APPROACH: (Do not exceed 230K until JEROD) Climb to 1200 then climbing right turn to 3500 direct JEROD and hold.	
ASOS 118.325	SOCAL APP CON 135.275 251.1	CLNC DEL 120.225	UNICOM 123.0 (CTAF) 0



ELEV -115	TDZE -121
-----------	-----------



CATEGORY	A	B	C	D
LPV DA	129-3/4 250 (300-3/4)			
RNAV MDA	260-1 381 (400-1)	260-1 1/8 381 (400-1 1/8)		
CIRCLING	320-1 435 (500-1)	340-1 455 (500-1)	460-1 1/2 575 (600-1 1/2)	780-3 895 (900-3)



SW-3, 08 SEP 2022 to 06 OCT 2022

SW-3, 08 SEP 2022 to 06 OCT 2022