

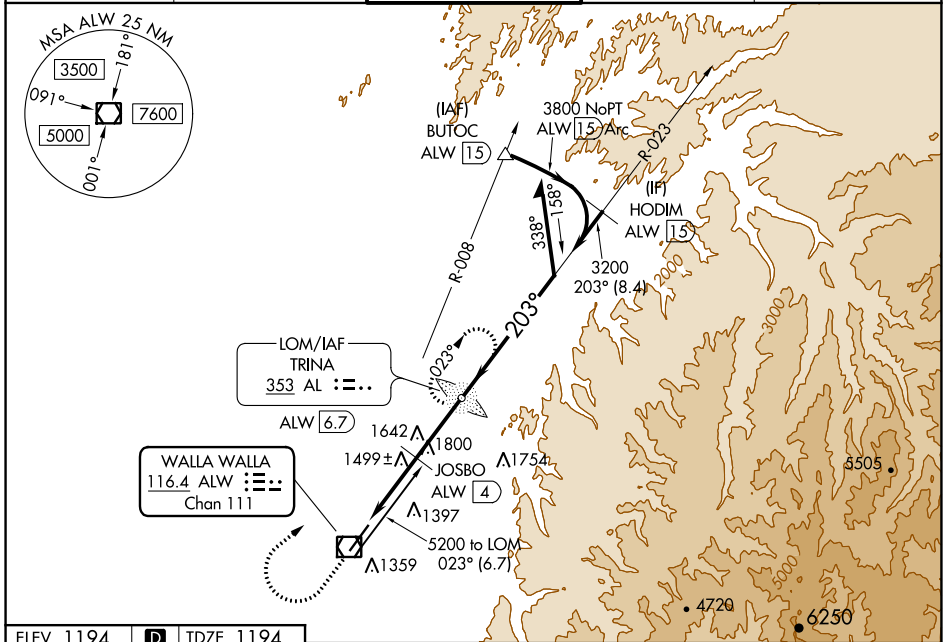
VOR/DME ALW <b>116.4</b> Chan <b>111</b>	APP CRS <b>203°</b>	Rwy Idg <b>6527</b> TDZE <b>1194</b> Apt Elev <b>1194</b>
------------------------------------------------	------------------------	-----------------------------------------------------------------

# VOR RWY 20

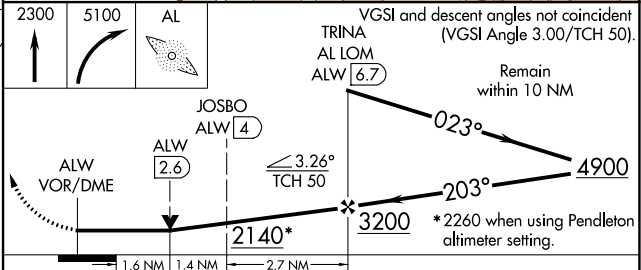
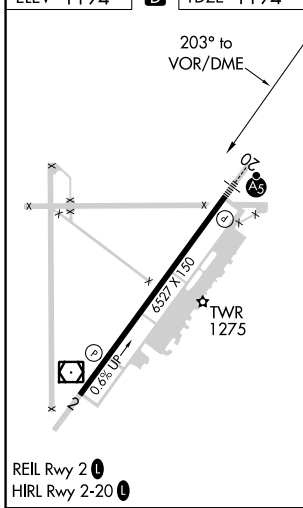
WALLA WALLA RGNL (ALW)

ADF required.	MALSR	MISSED APPROACH: Climb to 2300 then climbing right turn to 5100 direct TRINA LOM/ALW 6.7 DME and hold, continue climb-in-hold to 5100.
▲ NA For inop ALS, increase JOSBO fix minimums S-20 Cats C/D visibility to 1½ SM.		

ASOS <b>135.875</b>	CHINOOK APP CON * <b>133.15 379.15</b>	WALLA WALLA TOWER * <b>118.5 (CTAF) 289.4</b>	GND CON <b>121.6 289.4</b>	UNICOM <b>122.95</b>
------------------------	-------------------------------------------	--------------------------------------------------	-------------------------------	-------------------------



ELEV 1194	<b>D</b>	TDZE 1194
-----------	----------	-----------



CATEGORY	A	B	C	D
S-20	2140/40	946 (1000-¾)	2140-2	946 (1000-2)
<b>C</b> CIRCLING	2140-1¼	946 (1000-1¼)	2140-2¾ 946 (1000-2¾)	2300-3 1106 (1200-3)
JOSBO FIX MINIMUMS (DME REQUIRED)				
S-20	1760/24	566 (600-½)	1760-1¼	566 (600-1¼)
<b>C</b> CIRCLING	1760-1 566 (600-1)	1820-1 626 (700-1)	2120-2¾ 926 (1000-2¾)	2300-3 1106 (1200-3)

NW-1, 08 SEP 2022 to 06 OCT 2022

NW-1, 08 SEP 2022 to 06 OCT 2022