

WAAS CH 82701 W11A	APP CRS 123R	Rwy Idg 10996 TDZE 2599 Apt Elev 2643
--	------------------------	--

RNAV (GPS) Z RWY 11L

TUCSON INTL (TUS)

RNP APCH: ▼ For uncompensated Baro-VNAV systems, LNAV/VNAV NA below -3°C or above 52°C. For inoperative ALS, increase LNAV/VNAV all Cats to RVR 5500 and increase LNAV Cat C, D and E visibilities to 2 SM.	MALSR 	MISSED APPROACH: Climb to 6000 (Cat E 8000) direct CURGA and on 213° track to REBDE and on 303° track to TOYOP and hold.
--	-----------	--

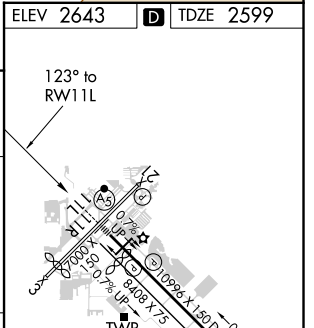
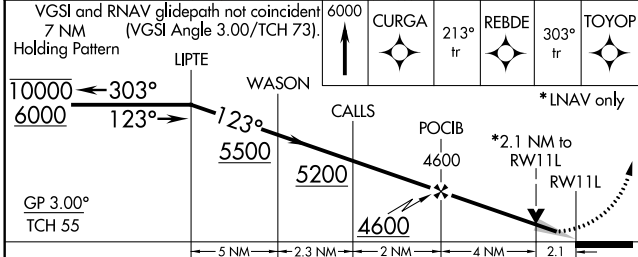
ATIS 123.8 279.65	TUCSON APP CON 119.4 318.1	TUCSON TOWER 118.3 257.8	GND CON 124.4 348.6	CLNC DEL 126.65 326.2
-----------------------------	--------------------------------------	------------------------------------	-------------------------------	---------------------------------



SW-4, 08 SEP 2022 to 06 OCT 2022

SW-4, 08 SEP 2022 to 06 OCT 2022

ELEV 2643	<input checked="" type="checkbox"/> TDZE 2599
-----------	---



CATEGORY	A	B	C	D	E
LPV DA		2849/24	250 (300-½)		
LNAV/VNAV DA		2967/40	368 (400-¾)		
LNAV MDA	3320/24	721 (700-½)	3320-1½	721 (700-1%)	3320-1¾
CIRCLING	3320-1	677 (700-1)	3320-2	3660-3	3920-3
			677 (700-2)	1017 (1100-3)	1277 (1300-3)

HIRL Rwy 11L-29R
MIRL Rwy 3-21 and 11R-29L
REIL Rwy 21, 29L and 29R