

WAAS CH <b>65931</b> <b>W04A</b>	APP CRS <b>038°</b>	Rwy Idg TDZE Apt Elev	<b>4499</b> <b>1949</b> <b>1957</b>
--	------------------------	-----------------------------	---

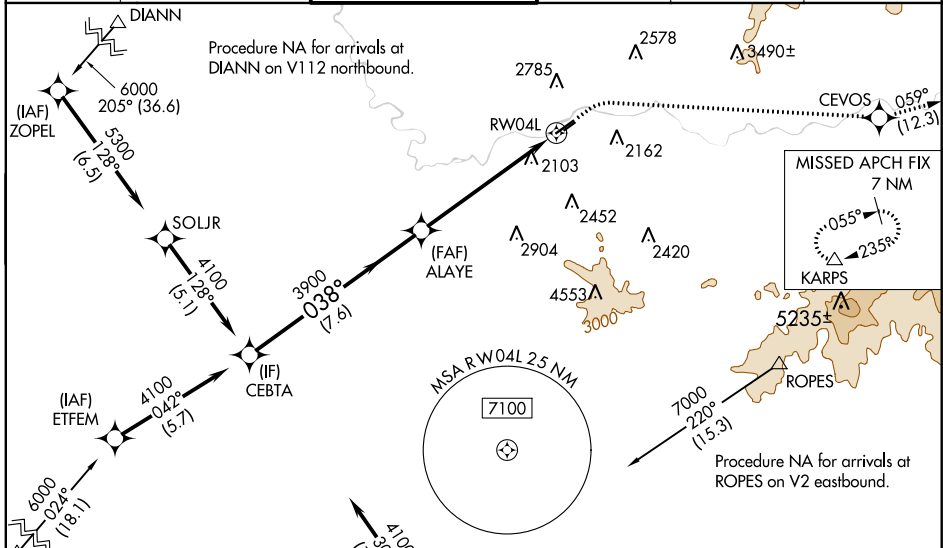
# RNAV (GPS) RWY 4L

FELTS FLD (S'F'F)

**⚠** Baro-VNAV NA when using Spokane Intl altimeter setting. For uncompensated Baro-VNAV systems, LNAV/VNAV NA below -18°C (-1°F) or above 54°C (130°F). Circling NA northwest of Rwy 4L-22R. DME/DME RNP-0.3 NA. When local altimeter setting not received, use Spokane Intl altimeter setting and increase all DA 82 feet and all MDA 100 feet. Increase LPV all Cats, LNAV/VNAV all Cats, LNAV Cat C and Circling Cat C visibility ½ mile; increase LNAV Cat A/B/D and Circling Cat B/D visibility ¼ mile. Helicopter visibility reduction below ¼ SM NA. \* LPV missed approach requires a minimum climb of 330 feet per NM to 5400.

**MISSED APPROACH:** Climb to 2850 then climbing right turn to 8000 direct CEVOS and on track 059° to KARPS INT and hold, continue climb-in-hold to 8000.

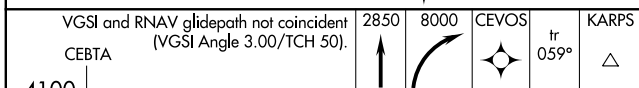
ATIS <b>120.55</b>	SPOKANE APP CON <b>133.35 263.0</b>	<b>FELTS TOWER *</b> <b>132.5 (CTAF) 239.025</b>	GND CON <b>121.7</b>	CLNC DEL <b>121.7</b>	UNICOM <b>122.95</b>
-----------------------	--	---	-------------------------	--------------------------	-------------------------



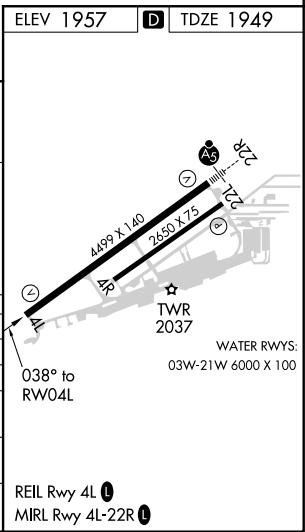
Procedure NA for arrivals at DIANN on V112 northbound.

Procedure NA for arrivals at GRAPH on V204 southwest bound.

Procedure NA for arrivals at ROPES on V2 eastbound.



CATEGORY	A	B	C	D
LPV DA*		2199-1	250 (300-1)	
LPV DA		2529-2	580 (600-2)	
LNAV/VNAV DA		2779-3	830 (900-3)	
LNAV MDA	2820-1 871 (900-1)	2820-1¼ 871 (900-1¼)	2820-2½ 871 (900-2½)	871 (900-2½)
CIRCLING	2820-1¼	863 (900-1¼)	3020-3 1063 (1100-3)	3360-3 1403 (1500-3)



NW-1, 08 SEP 2022 to 06 OCT 2022

NW-1, 08 SEP 2022 to 06 OCT 2022